



Ohio Network of Certified  
Pathways Community HUBs

---

# Community Health Workers and HUBs





## Presenters

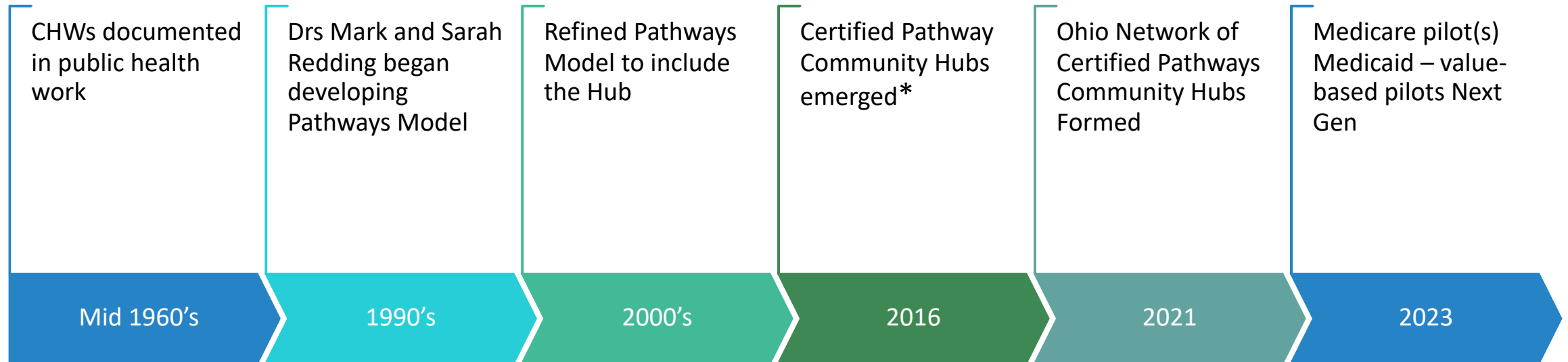
---

Sarah Mills- Health Care Access Now

Jenelle Hoseus- Central Ohio  
Pathways HUB

Rita Horwitz- Better Health  
Partnership

# History of Pathway Community HUBs (PCH)



\* During the **2016/2017 State of Ohio Biennial Budget** provided an increase in funding to the **Ohio Commission on Minority Health (Commission) to bring a model to scale in Ohio**. This funding allowed for the Replication and Expansion of the Certified Pathways Community HUB Model to address infant mortality.

# Senate Bill 332:

Sponsored by Senators Charleta Tavares  
and Shannon Jones

Passed on April 6, 2017

Provided public policy support to decrease  
Infant Mortality, including OCMH Funding  
for HUBs

Provided the following:

- CHW Certification Standard through  
the Ohio Board of Nursing
- Certified Pathways Standard
- Provided for reimbursement through  
Medicaid/Managed Care Plans





# Ohio Network Of Certified Pathways Community Hubs

---

- Access Tusc Bridges to Wellness HUB
- Better Health Partnership
- Central Ohio Pathways HUB
- CHAP
- Community Action Akron Summit
- Corporation for Ohio Appalachian Development (COAD)
- Dayton Regional Pathways HUB/GDAHA
- Health Care Access Now (HCAN)
- Health Impact Ohio
- Lorain County Community Action Agency
- Mahoning Valley Pathways HUB
- Northwest Ohio Pathways HUB
- Stark County Community Action Agency

# PCHI<sup>®</sup> Model

---



A value-based, QI framework for a community-based care coordination network, called a Pathways Community HUB (PCH).

*PCHs must use PCHI's standard data model and achieve national certification.*



Demonstrable ROI and measured health improvement, based on studies by Medicaid Managed Care plans whose members received PCHI Model care coordination.



Leverages the skills of CHW to find and engage residents who are under-resourced and at greatest risk for poor health outcomes.



A certified PCH improves health, reduces costs, and promotes equity.

# 20 Evidence-Based Pathways

---

- Adult education
- Behavioral health referral
- Developmental referral
- Developmental screening
- Education
- Employment
- Family planning
- Health Insurance
- Housing
- Immunization referral
- Immunization screening
- Lead screening
- Medical home
- Medical referral
- Medication assessment
- Medication Management
- Postpartum
- Pregnancy
- Social service referral
- Tobacco cessation

# PCHI<sup>®</sup> Model Components

---

1. **Standard forms** for collecting information on participants (Demographic Form, Visit Form, Progress Form)
2. **21 Pathways** - Workflow for addressing risk
3. 60+ Evidence based **Learning Modules**
4. **Quality Benchmark Report**
5. Standard **Outcome** and **engagement-based** billing approach

*\*Over 400 defined and standardized data fields in the PCHI Data Model Addresses over 170 Individually Modifiable Risk Factors*

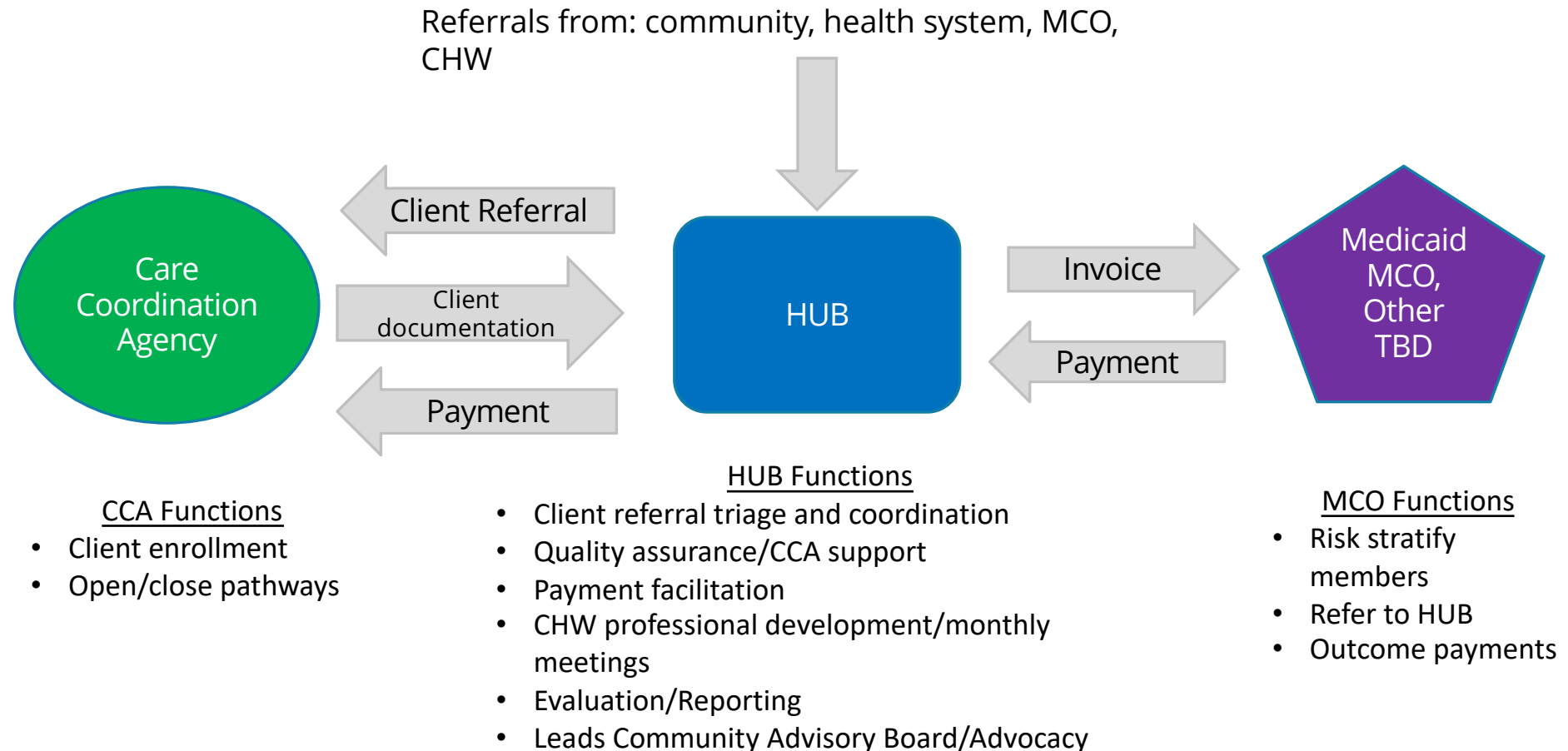
*\* For additional information on upcoming changes to PCHI model –visit [PCHI.org](https://PCHI.org)*



# Pathways HUBs in Practice

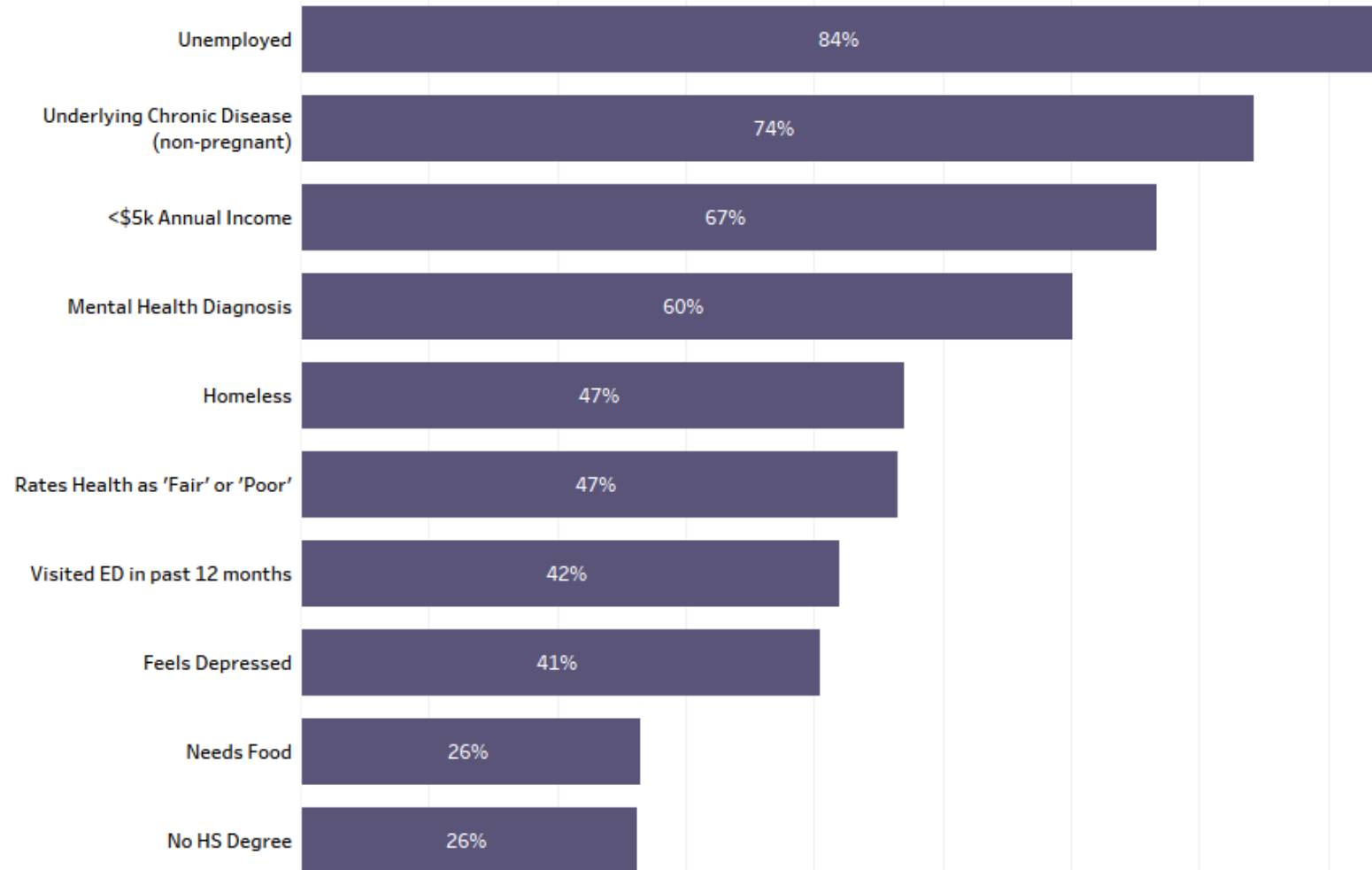
---

# Pathways HUB Model Roles and Information Exchange



# Risk Factors of Clients

% of Enrolled Adults with Underlying Issues (Jan. 2022 – Dec. 2022)

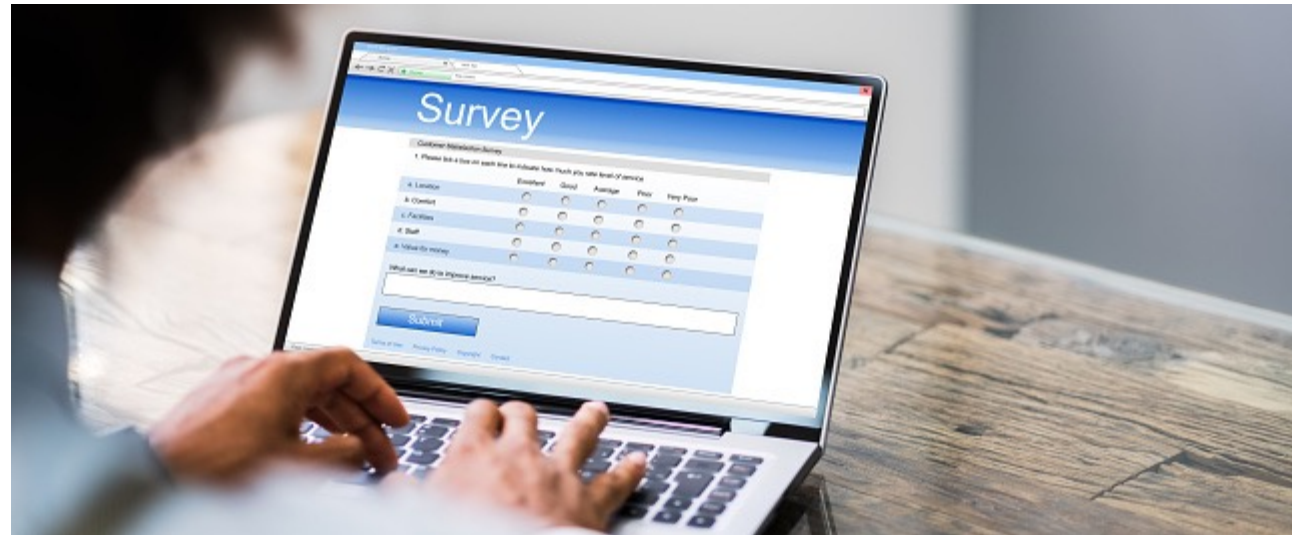


# Pathway Outcomes: (Jan. 2022 – Dec. 2022)

	Pathways Closed ★	% Successfully Closed ★	
Medication Management	13	100%	80% of all pathways closed are “successfully closed”
Immunization Screening	1	100%	
Immunization Referral	2	100%	
Developmental Referral	1	100%	
Education	805	99%	
Medication Assessment	27	96%	
Health Insurance	79	90%	
Postpartum	68	84%	
Social Service Referral	1,560	80%	
Tobacco Cessation	8	75%	
Housing	16	69%	
Medical Referral	688	66%	
Medical Home	147	56%	
Pregnancy	140	56%	
Behavioral Health	25	52%	
Employment	6	50%	
Lead	11	45%	
Adult Learning	5	20%	
Family Planning	0	0%	

# Client feedback survey

---





# Partnerships

Community Events

Education/capacity  
building for CHWs

Special population  
initiatives

# Community Health Workers Day June 6, 2022







## MAIN RESPONSIBILITIES OF OHIO CHWs:

90%

**Connect** clients to community resources

89%

**Educate** clients about how to use health and social services

86%

**Motivate** clients to obtain care and other services

75%

**Provide** information so clients understand how to prevent or manage health conditions

75%

**Conduct** home visits to provide education, assessment, and social support



State	Current Status	Certification/ Credentialing and Supervision Requirements	Core Competencies	Continuing Education	Certifying Entity
OHIO	The Ohio Board of Nursing issues and renews CHW certificates, as authorized by HB 95 (enacted 2003). The certifications are to be renewed biennially.	<p>Training program must be approved by the Board of Nursing; at least 100 hours of classroom instruction and 130 hours of clinical instruction, standard training exam. Certification needed in order to perform tasks delegated by a nurse. Only an RN may supervise a CHW when performing delegated activities related to nursing care.</p> <p>Grandfathering for those employed as CHWs before 2005.</p>	<p>The standard minimum curriculum for community health workers shall include courses, content, and expected outcomes, relative to the defined role of the community health worker, in the following major areas:</p> <ol style="list-style-type: none"> <li>1. Health care</li> <li>2. Community resources</li> <li>3. Communication skills</li> <li>4. Individual and community advocacy</li> <li>5. Health education</li> <li>6. Service skills and responsibilities</li> </ol> <p>The standard minimum curriculum for community health workers shall also educate students on needs throughout the span of a lifetime including the following:</p> <ol style="list-style-type: none"> <li>1. The family during childbearing years</li> <li>2. The family during pregnancy</li> <li>3. The newborn, infant, and young child</li> <li>4. Adolescents</li> <li>5. Special health care and social needs of target populations such as grandparents raising grandchildren, adults caring for aging parents, and children and adults with disabilities</li> </ol>	15 hours continuing education every 2 years.	Ohio Board of Nursing

# Why Certify?

## TOP 3 ATTITUDES OF CERTIFIED & NON-CERTIFIED CHWs TOWARDS CERTIFICATION

- 76.5% Certification better equips them to **SERVE** the community
- 63.4% Certification gives **VALUE** to the profession
- 52.1% Certification increases **RESPECT** from the community

Ohio Department of Health and  
Ohio Colleges of Medicine  
Government Resource Center  
2018 Community Health Worker  
Statewide Assessment







- Training programs are too long



- Training programs are too costly
- Not enough affordable continuing education opportunities
- Certification does not make a difference in terms of pay



- Location of training programs are not accessible for all CHWs
- Not enough accessible continuing education opportunities



- The process of certification renewal is not clear enough
- Some CHWs in Ohio are not even aware that certification exists



- Background checks prohibit some CHWs from ever getting certified

# Barriers to Certification

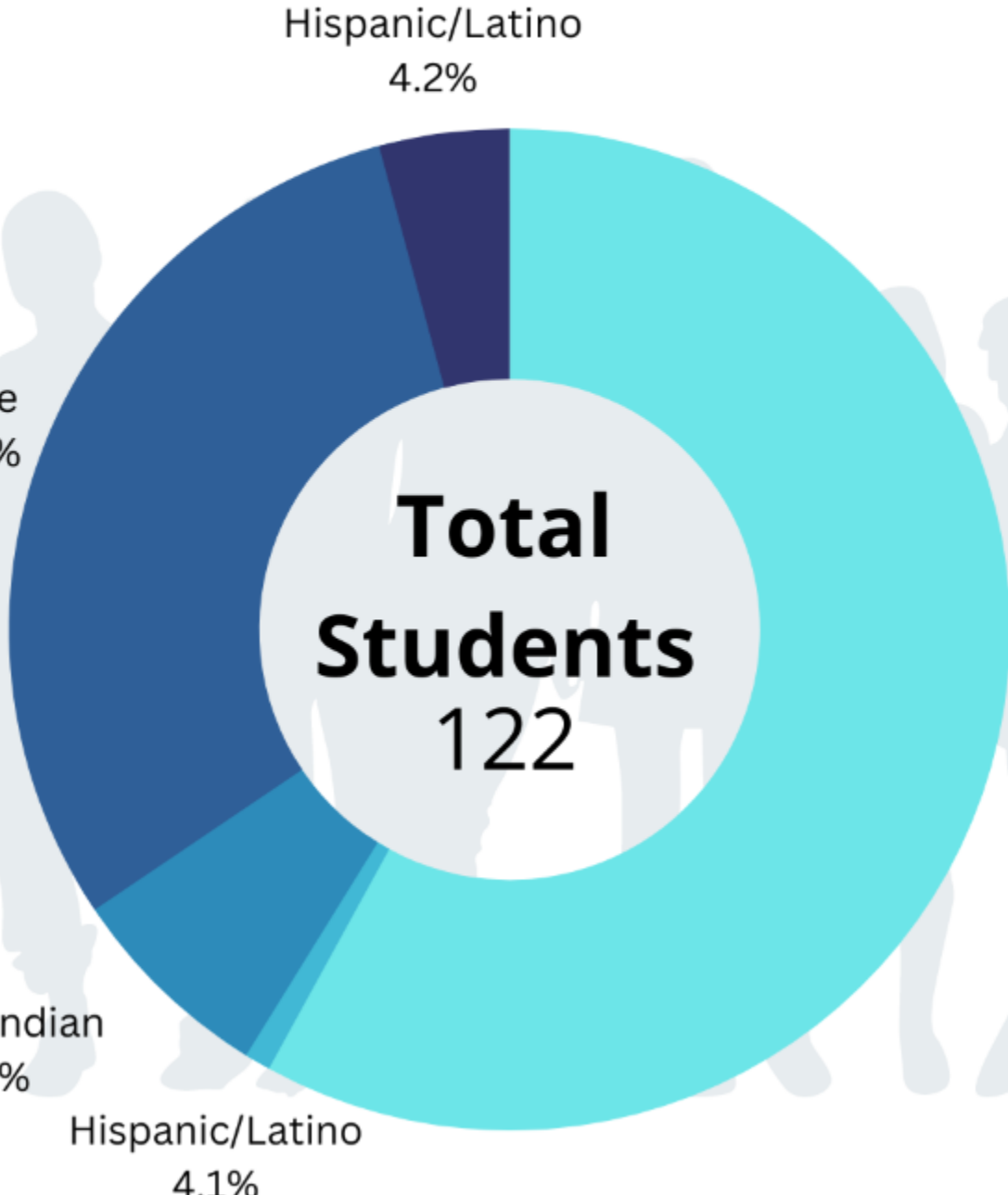
Ohio Department of Health and  
Ohio Colleges of Medicine  
Government Resource Center  
2018 Community Health Worker  
Statewide Assessment



**5 Cohorts  
Since 2021**

**Gender:**  
98 Females  
23 Males  
1 Nonbinary

**Ages:**  
16-65



Black/African American  
58%

HRSA Grant:  
\$3 mil; 3 yrs

60% allocated  
to CHW training

---

**The mission of the Community Health Worker Capacity Building Collaborative is to support and strengthen the workforce dedicated to empowering vulnerable populations to improve the health of the community.**

---

**Goal 1: Expand the public health workforce**

---

**Goal 2 : Enhance, expand and adapt existing training programs**

---

**Goal 3: Increase employment readiness**

# Population Health Initiatives/ Outcomes

---

Pediatric lead testing and referrals

Adult diabetes and CVD/ post acute stroke

Pregnancy / infant mortality

## **Larger Scale Outcomes Relate to Multiple risks Addressed**

- Reduced Hospitalization
- Lower ER Visits
- Reduced ACE's
- Reduced cost of care
- Improved School Performance
- Improved Employment Retention
- Economic Success and Stability
- Behavioral Health



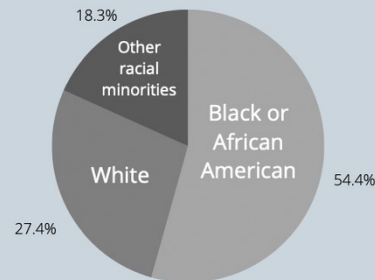
# DATA AND IMPACT

## The HUB reaches unique, at-risk populations



**92%**

of babies born to Black and African American mothers who were a part of funding from the Ohio Commission on Minority Health in the HUB were born at a **healthy birth weight**.



**54.4%**

of participants receiving services in the HUB are Black or African American. This data shows us that HUB services are essential to **addressing health disparities** amidst the COVID-19 crisis.



**95%**

of participants in the **theft diversion** program with Columbus City Attorney Zach Klein have successfully completed the program, receiving connections to care and services rather than jail time.



# Northwest Ohio Pathways HUB: Impact on Infant Mortality Lucas County 2018 Buckeye Health Plan study

---

## Infant Mortality in Lucas County: 3,700 births

	Lucas County IM Rate 2017-2018	Pathways HUB IM Rate 2017-2018
<b>African American/ Black</b>	<b>15.2</b>	<b>8.7</b>
White	5.7	4.1
Other	6.5	N/A*
Total	8.5	6.9

**High-risk mothers  
without HUB**  
intervention were **1.55  
times more likely** to  
deliver a baby needing  
Special Care Nursery  
or NICU care than  
those with HUB  
intervention

\* Numbers too small to determine rate.

Ohio Pathways  
HUB  
Collaboration

Standardized Reporting

Shared Best Practices

Innovation

# Statewide Network to Promote all HUBs and CHWs' Sustainability



**Providing care coordination for Ohio's most vulnerable citizens and addressing inequity in public health.**

The Ohio Network of Certified Pathways Community HUBs work to improve the health outcomes of our communities. During the COVID-19 pandemic we have each responded in our communities by steadfastly providing service to our clients.



In Q3 of 2020, our member HUBs served an average of 479 clients

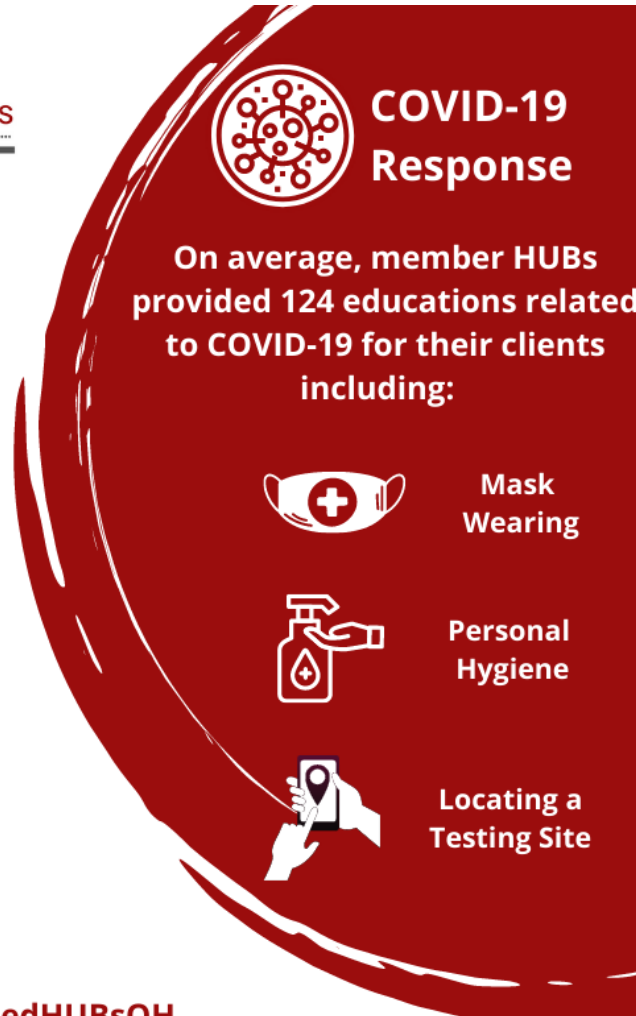


There was an average of 2,480 Pathways, or connections to care and services, opened in Q3



CHWs in member HUBs worked with their clients to complete 1,879 Pathways, meaning successful outcomes were achieved

#CertifiedHUBsOH



## Ohio Network of HUBs:

- Central Ohio Pathways HUB
- Dayton Regional Pathways HUB
- Stark County Community Action Agency HUB
- Access Tuscarawas Bridges to Wellness HUB
- Akron Summit Community Action Agency HUB
- Health Care Access Now HUB (Cincinnati)
- Community Health Access Project-CHAP (Mansfield)
- Hospital Council of Northwest Ohio
- Better Health Pathways HUB (Cleveland)
- Mahoning County Public Health HUB
- Corporation for Appalachian Development HUB (Southeast Ohio)
- Lorain County Community Action Agency HUB

---

# Thank you!

Questions?

