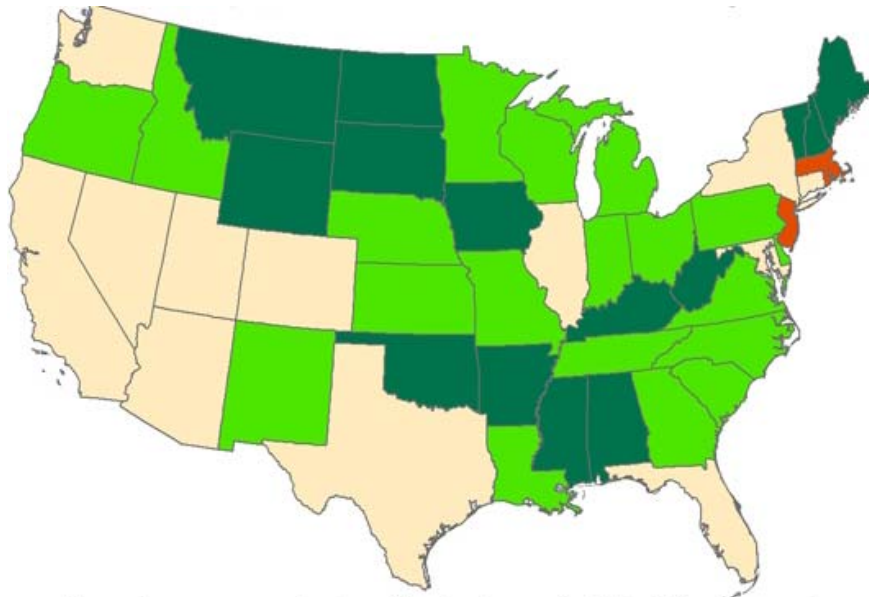


Medicaid Strategies and Rural Health



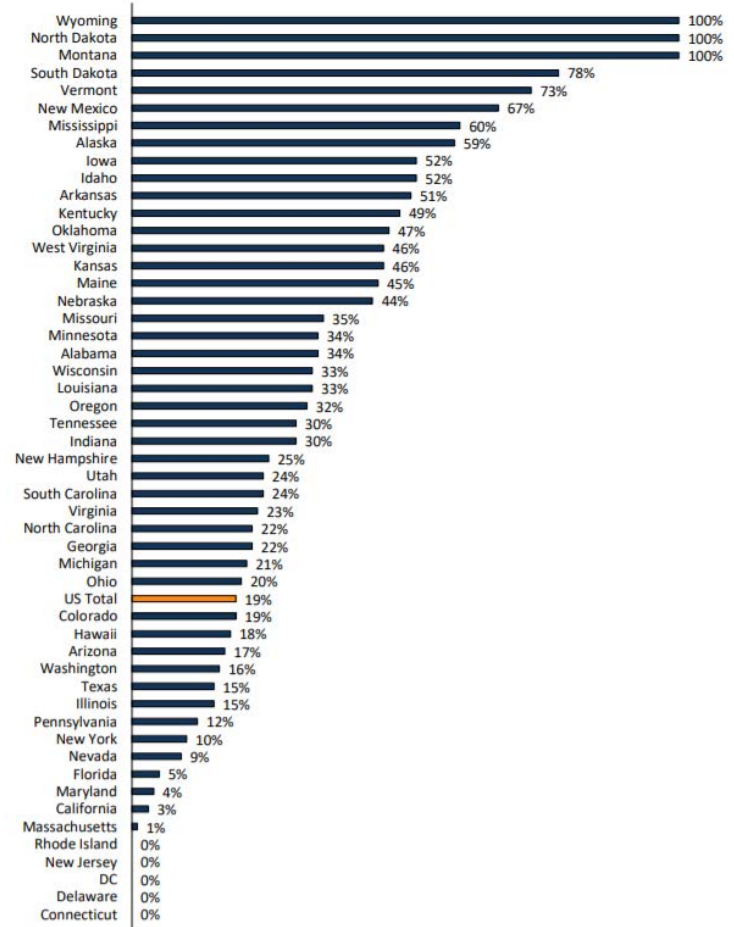
Gil Liu, MD
Chief Medical Officer, Kentucky Department for Medicaid Services
2018 Milbank Foundation Reforming States Group



Map shows percent of residents in each state living in rural areas or "urban clusters" of between 2,500 and 50,000.



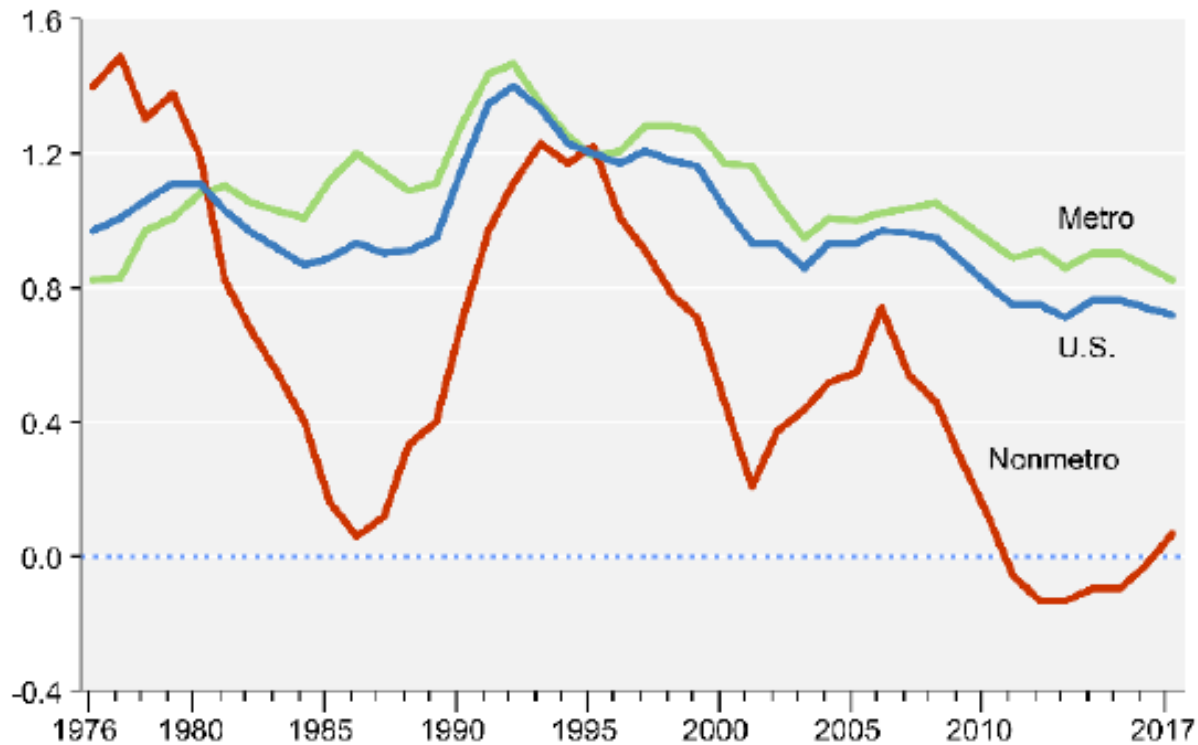
Source: U.S. Census



NOTE: Includes nonelderly individuals ages 0-64.
SOURCE: Kaiser Family Foundation analysis based on the 2015 American Community Survey 1-Year Estimates.

Population change by metro/nonmetro status, 1976-2017

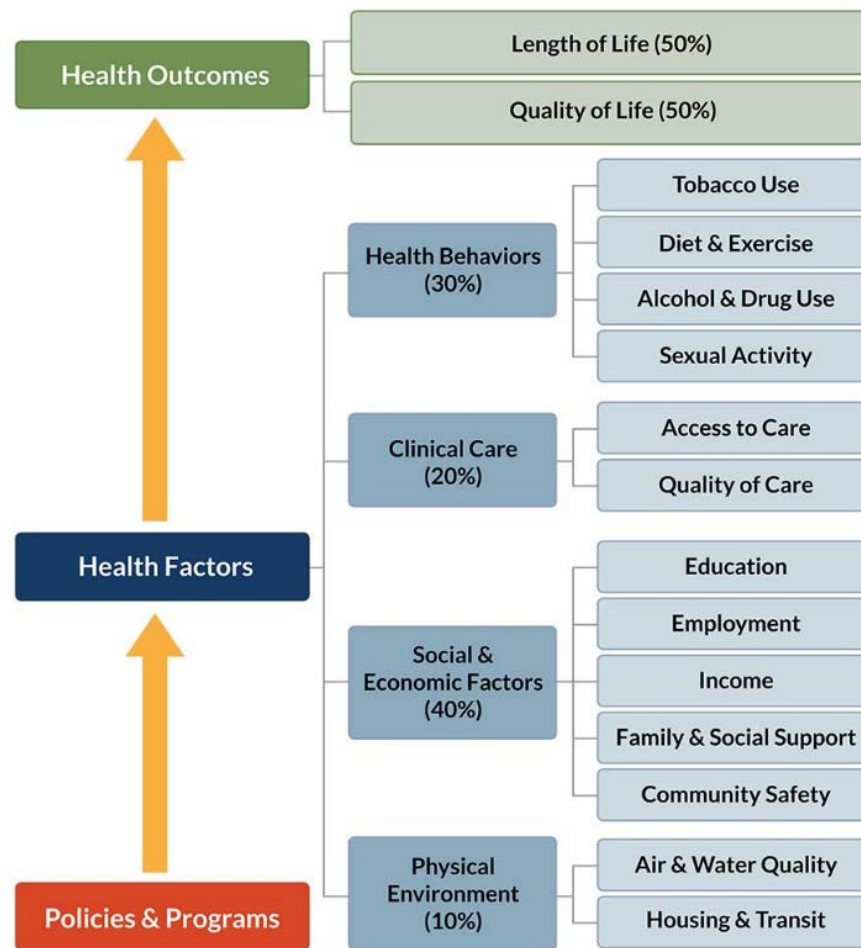
Percent change from previous year



Note: Metro status changed for some counties in 1980, 1990, 2000, and 2010.

Source: USDA, Economic Research Service using data from the U.S. Census Bureau.

Things that determine one's health



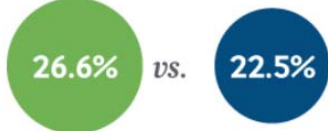
County Health Rankings model © 2016 UWPHI

A confluence of demographic, economic, social, and health system factors appear to put rural Americans at greater risk.

ACCESS TO CARE
Physicians per 100,000 Population



Uninsured Rate, 2010–12



DEMOGRAPHICS
Poverty Rate



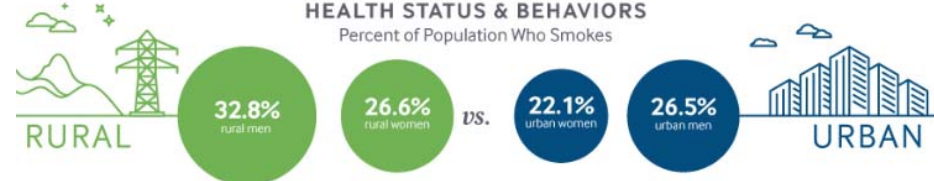
Percent of Population 65 and Over



Rural populations are declining but also becoming more diverse.

83% of rural population growth from 2000 to 2010 came from non-whites.

HEALTH STATUS & BEHAVIORS
Percent of Population Who Smokes

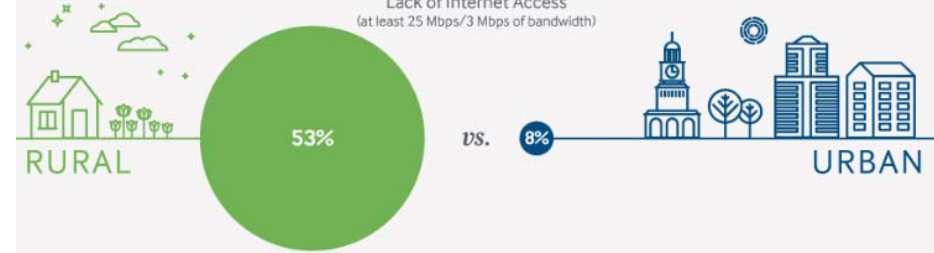


- 8.6% higher prevalence of diabetes
- 38.8% higher prevalence of coronary heart disease

Suicide Rate for Male Youth per 100,000 Population, 2008–2010



ISOLATION
Lack of Internet Access
(at least 25 Mbps/3 Mbps of bandwidth)

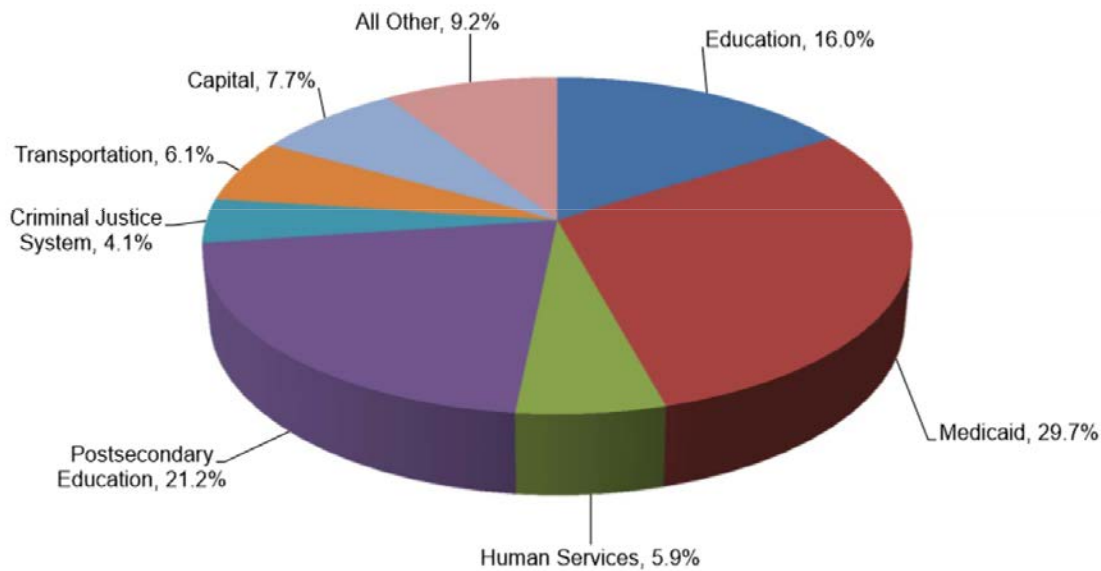


40% of rural counties lack public transportation

even though rural residents are more likely to be dependent on it.

**2016-2018 Biennium
Distribution of All Funds Appropriations**

Total = \$74.3 Billion

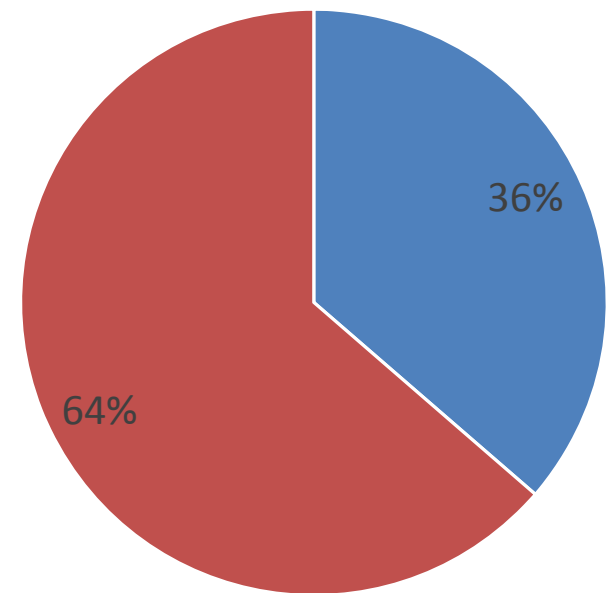


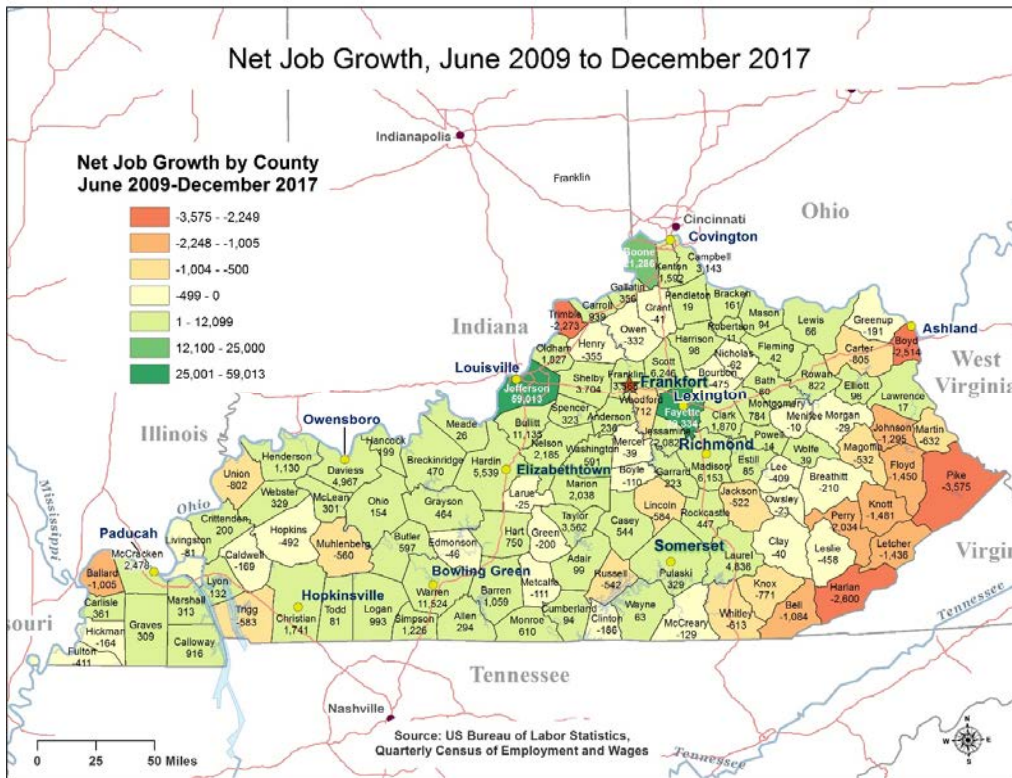
* Education includes the Department of Education, Teachers' Retirement System, School Facilities Construction Commission and the Education Professional Standards Board.

** Human Services include the Health and Family Services Cabinet (net of Medicaid).

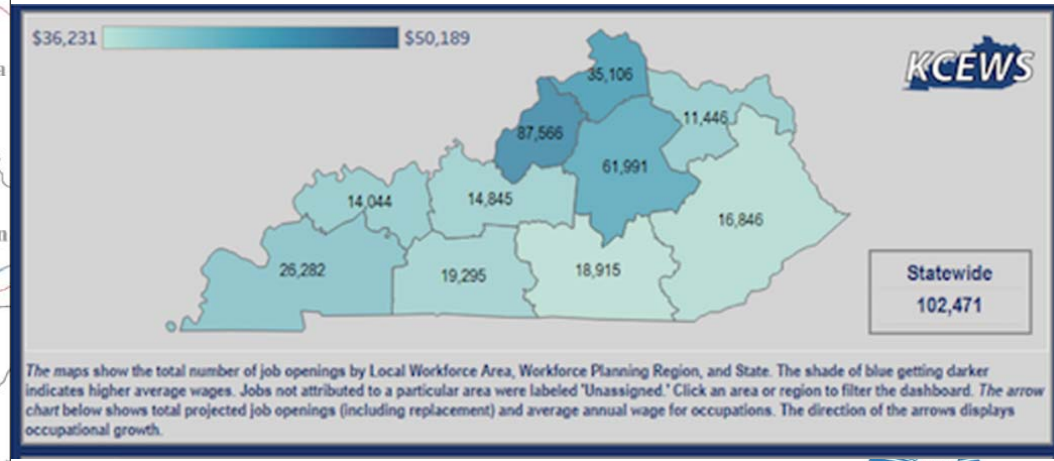
*** Criminal Justice System includes the Unified Prosecutorial System, Justice and Public Safety Cabinet and the Judicial Branch.

**KY Total Population = 4.4 M
KY Medicaid Enrollment = 1.4 M**





**KENTUCKY'S
UNEMPLOYMENT
RATE FOR JUNE
2018 IS
4.2%**



1115 MEDICAID WAIVER BRIEFING

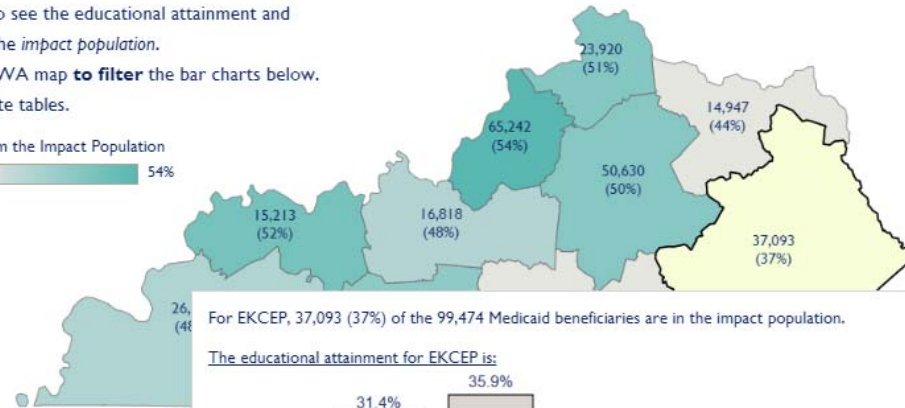
Click for more info on the impact population.



Outcomes for Impact Population Beneficiaries by Local Workforce Area (LWA)

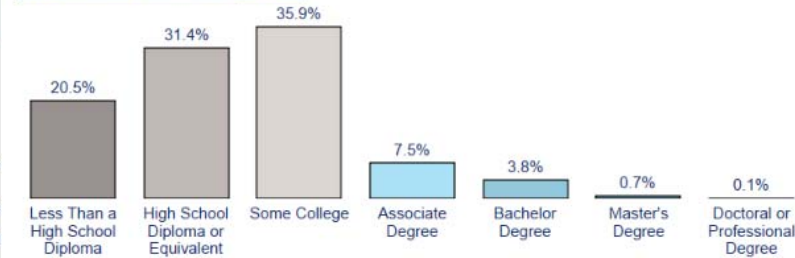
- **Hover** over red crosses to display additional information.
- **Hover** over the map to see the educational attainment and employment metrics for the *impact population*.
- **Click** an area on the LWA map **to filter** the bar charts below.
- **Click** for aggregate tables.

Percent of Beneficiaries from the Impact Population
 37% 54%

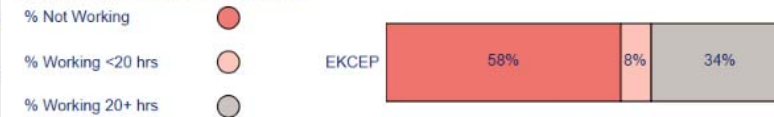


For EKCEP, 37,093 (37%) of the 99,474 Medicaid beneficiaries are in the impact population.

The educational attainment for EKCEP is:



The employment metrics for EKCEP are:



Comparing State and LWA Outcomes

Hover over the red cross to answer:

- How many beneficiaries are the impact population?
- What is the educational attainment for the impact population?
- How many people from the impact population are employed?
- How many people from the impact population are working less than 20 hours per week?
- How many people from the impact population are working 20 or more hours per week?

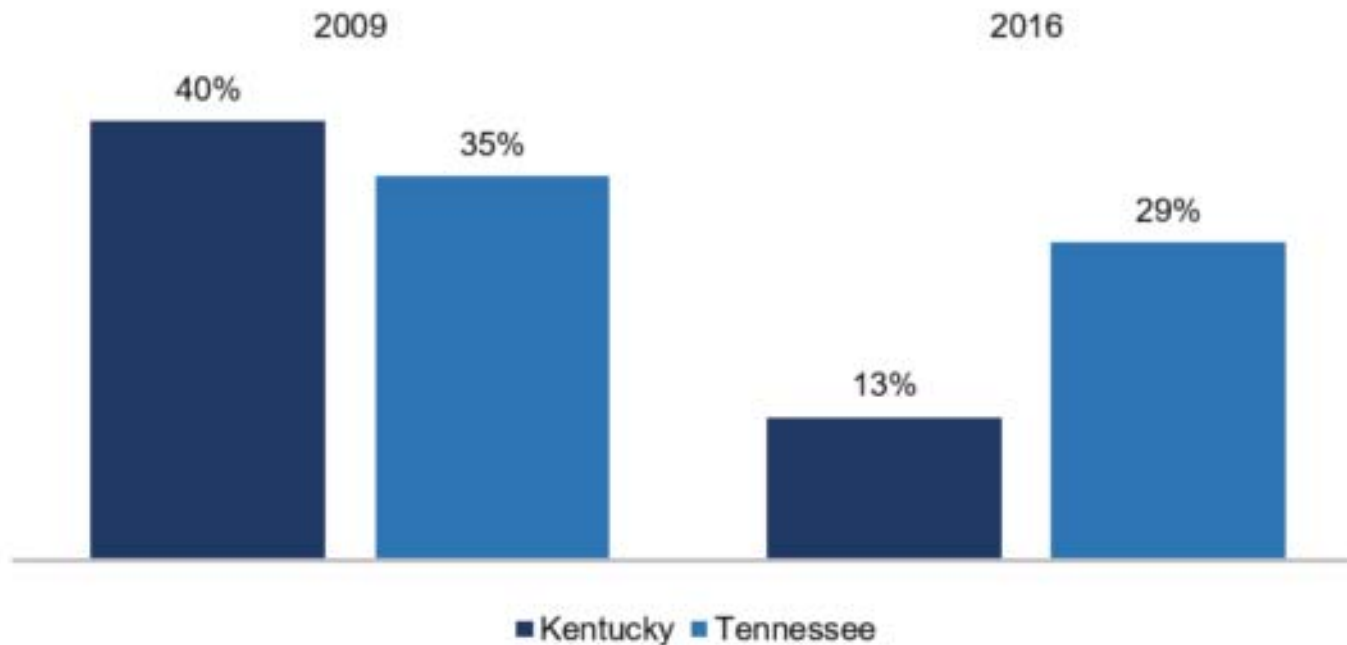


Demographics of Impact Population Beneficiaries

Impact

After Expansion, Kentucky's Rural Uninsured Rate Fell Much More than Tennessee's

Share of rural population under 138 percent of FPL without coverage



Source: Georgetown University and University of North Carolina.

Kentucky Center for Economic Policy | kypolicy.org



**APPLY A RURAL LENS
TO CMS PROGRAMS &
POLICIES**



**IMPROVE ACCESS TO
CARE THROUGH PROVIDER
ENGAGEMENT & SUPPORT**



**ADVANCE TELEHEALTH
& TELEMEDICINE**



**EMPOWER PATIENTS IN
RURAL COMMUNITIES TO
MAKE DECISIONS ABOUT
THEIR HEALTH CARE**



**LEVERAGE PARTNERSHIPS
TO ACHIEVE THE GOALS
OF THE CMS RURAL HEALTH
STRATEGY**

CMS
CENTERS FOR MEDICARE & MEDICAID SERVICES

**RURAL HEALTH
STRATEGY**

**5 KEY
OBJECTIVES**

Location and financial strength of Kentucky rural hospitals

- Excellent Health
- Good Health
- Fair Health
- Poor Health
- No FSI[®] Calculated



In 2015, 8% of the US population had convenient access to a clinic operated by one prominent retailer



If a major retail pharmacy¹ were to open a clinic in each one of its stores, over half of the US population would have access



If a major retail giant² were to open a health clinic in each one of its stores, more than three-fourths of the population would have access

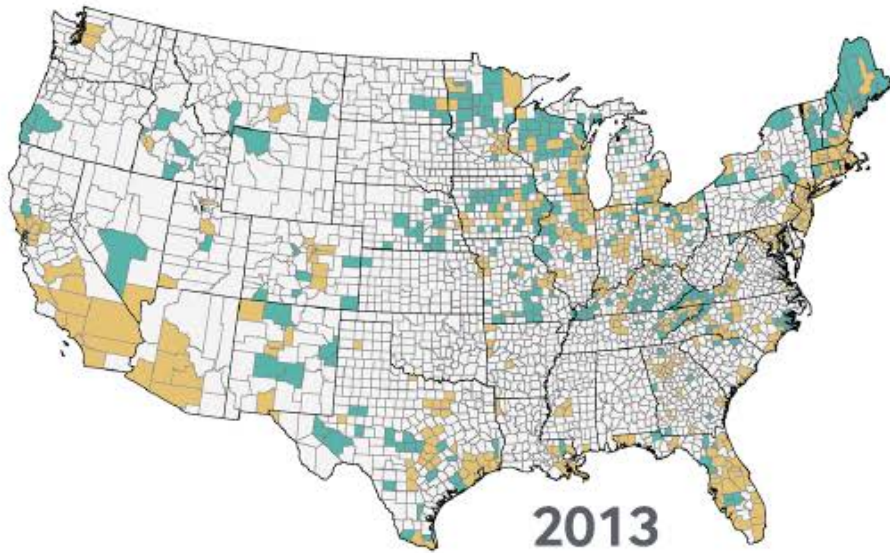


¹Analysis based on data on Walgreens locations in 2015.

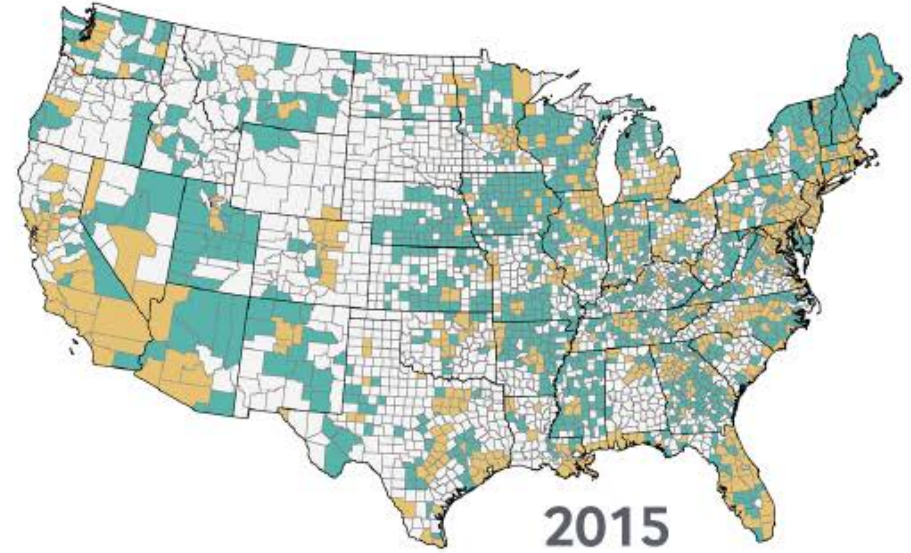
²Analysis based on data on Walmart locations in 2015.

Growth in Rural ACO Providers, 2013–15

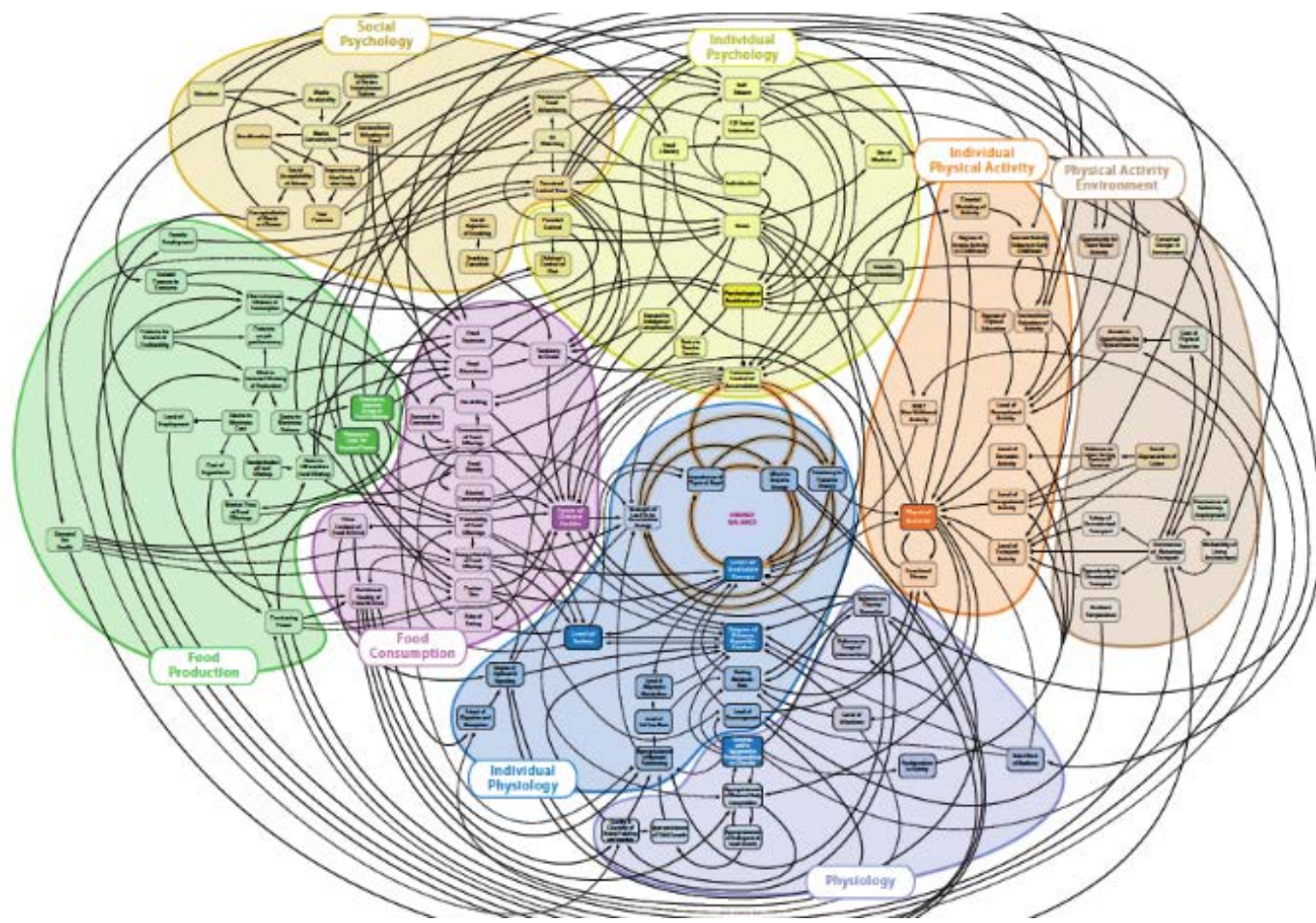
● Metropolitan with ACOs ● Non-metropolitan with ACOs ○ No ACOs



CMS-designated sites as of January, 2013.
Produced by RUPRI Center for Rural Health Policy Analysis, 2013.



CMS-designated sites as of December, 2015.
Produced by RUPRI Center for Rural Health Policy Analysis, 2016.



Integrating Behavioral and Physical Health Services

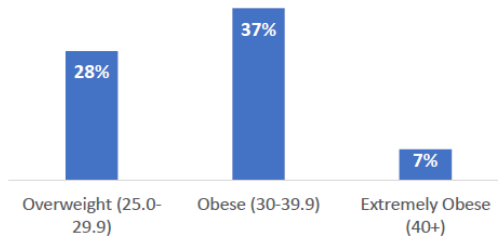


SAMHSA-HRSA
CENTER for INTEGRATED
HEALTH SOLUTIONS

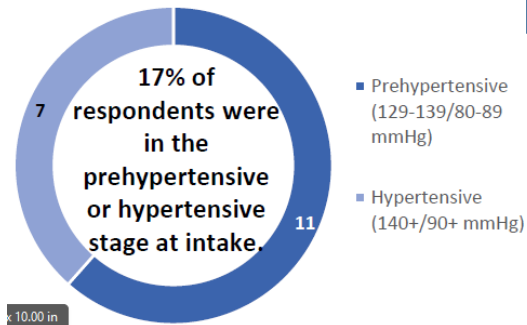
Promoting Integration of Primary and Behavioral Health Care (PIPBHC) Grant Site Visit Report

Kentucky Care Initiative – Mountain Comprehensive Care
Prestonberg, KY
Cohort X
August 1, 2018

72% of KCI respondents were
overweight, obese, or extremely
obese at intake

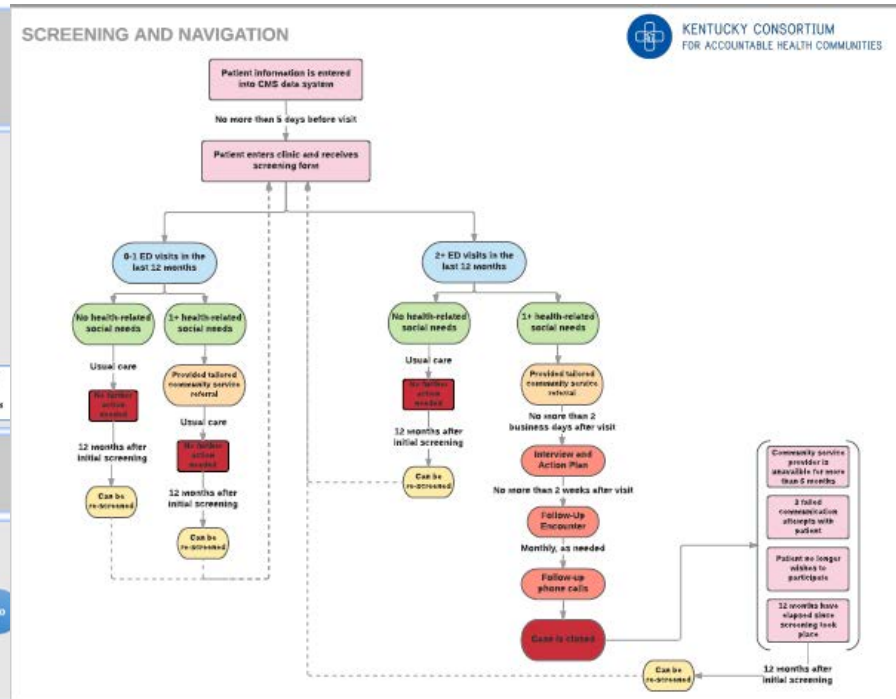
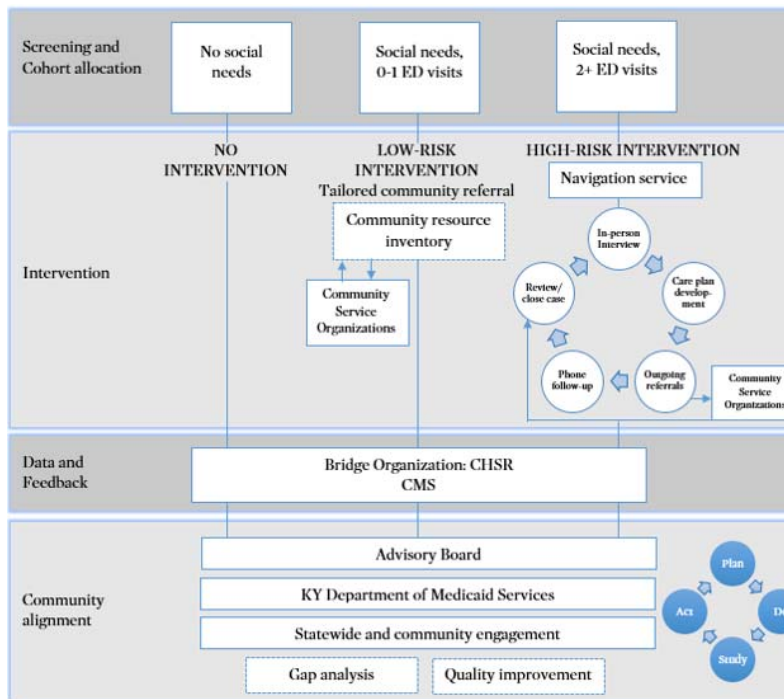


67%
Of participants had at-risk CO levels
(7+ppm) at intake



Internal Use Only

Addressing Social Determinants

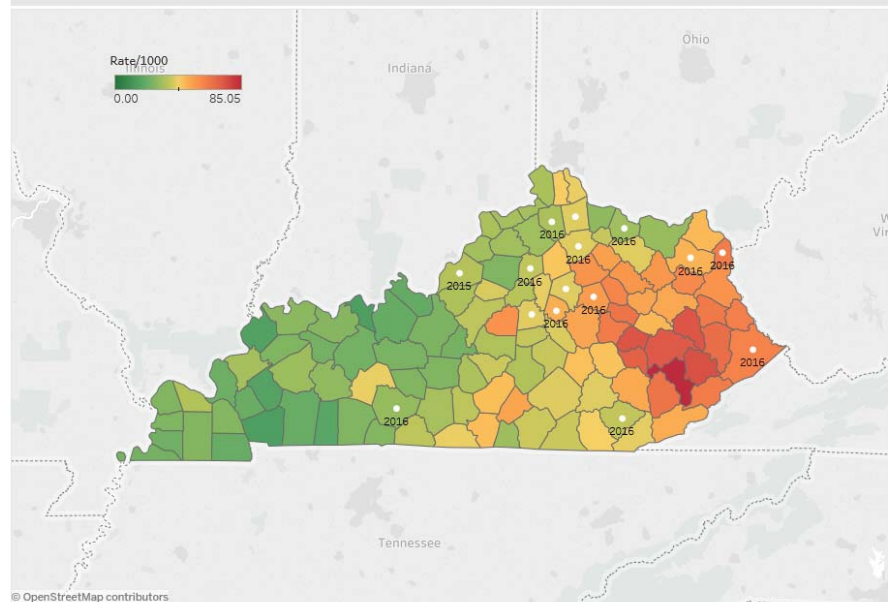


Public Health Partnership – getting upstream



Office of Health Policy
 Generated by: chfs.ds.ky.gov/GILLiu
 Report date: January 29, 2018
 Dashboard Created by: Lynn Ng

Calendar Quarter 2016-Q4 HERSEP Location Services for Any Conditions/Infections



Total Beneficiaries Count		1,638,168
Filtered Beneficiaries Count		1,638,168
Any Conditions/Infections		
Total Filtered BNF with Comorbidity		65,166
Rate per 1000		39.78
Demographic %		
	% of Filtered BNF	% of Filtered Comorbidity
Female	53.6%	55.1%
Male	46.4%	44.9%
Unknown	0.0%	0.0%
Black	10.62%	6.66%
Other	20.70%	16.59%
White	68.68%	76.75%
Hispanic	2.79%	1.12%
Non-Hispanic	79.47%	83.27%
Unknown	17.74%	15.61%
Adult	54.10%	80.74%
Child	39.93%	10.95%
Senior	6.30%	8.33%
MCO %		
Aetna	17.04%	13.51%
Anthem	7.67%	7.72%
Humana	8.99%	15.76%
Passport	19.27%	21.79%
WellCare	28.26%	30.68%
FFS	18.87%	12.59%
MCO Unknown	1.38%	0.02%

Enroll Quarter: 2016-Q4
 County Name: (All)
 Race: (All)
 Ethnicity: (All)
 Medicaid Region: (All)
 Age Group: (All)
 MCO Name: (All)
 Gender: (All)
 Comorbidity: Any Conditions/Infections



**SB250
18RS
WWW Version**

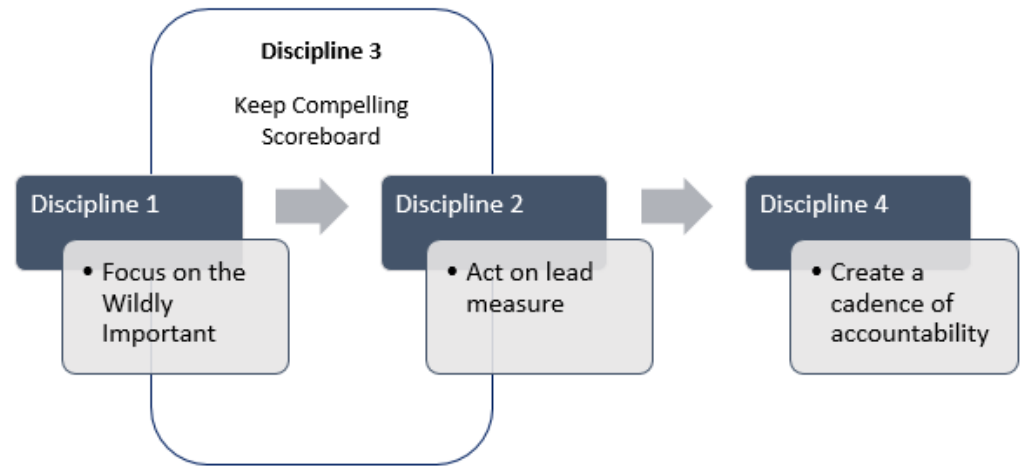
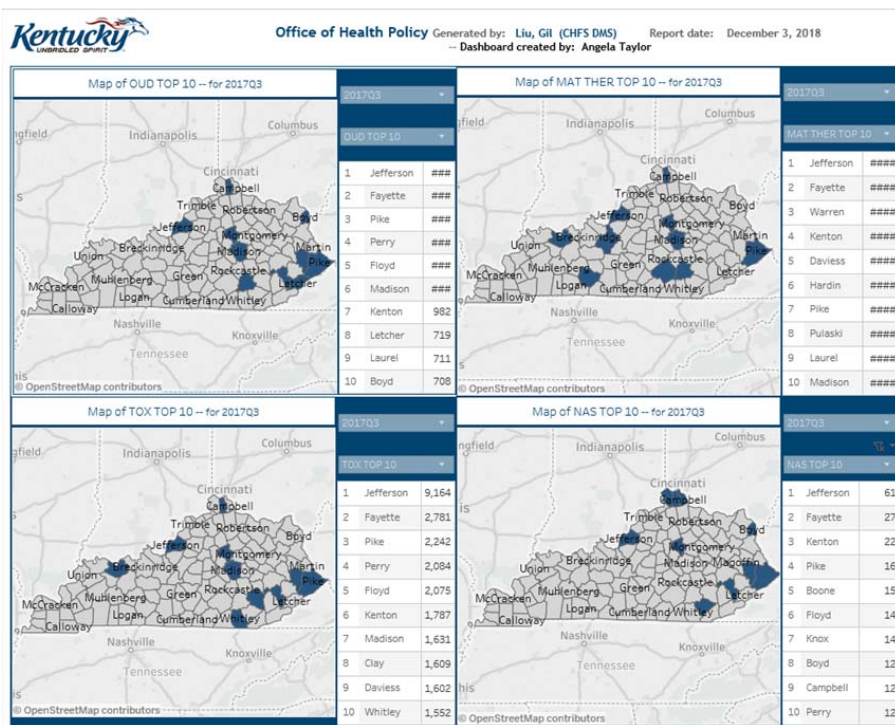
The hyperlink to a bill draft that precedes a summary contains the most recent version (Introduced/GA/Enacted) of the bill. If the session has ended, the hyperlink contains the latest version of the bill at the time of sine die adjournment. Note that the summary pertains to the bill as introduced, which is often different from the most recent version.

SB 250 (BR 1713) - J. Adams

AN ACT relating to screening for hepatitis C.
 Amend KRS 214.160 to establish that all pregnant women be tested for hepatitis C and recommend testing for children born from a pregnant woman who has a positive hepatitis C test result.



Strengthening Data-Informed Culture

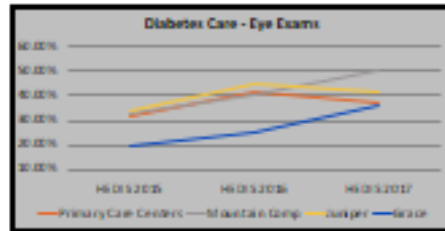
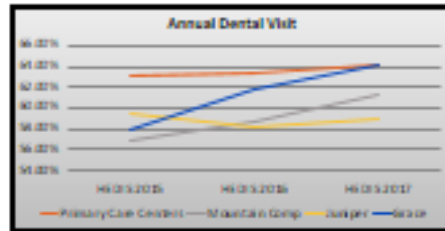


MCO Focus

Lock-In Utilization Data

Brand Name	% M
Gabapentin	
Hydrocodone/Acetaminophen	
Oxycodone/Acetaminophen	
Klonopin	
Phenergen	
Ativan	
Zanaflex	
Ultram	
Flexeril	
Zubsolv	
Prozac	
Valium	
Zofran	

HEDIS Data



Rural Contracting - First Care Clinics

City	ED Visits Avoided	ED /1000 Prior to Opening	ED /1000 After Opening
Corbin	146	998	441
Hopkinsville	146	1,163	528
Madisonville	222	3,420	2,068
Frankfort	249	1,812	499
Winchester	251	1,112	529
Total	1014	1,701	813

Grounding Policy in Local Community Relationships

