

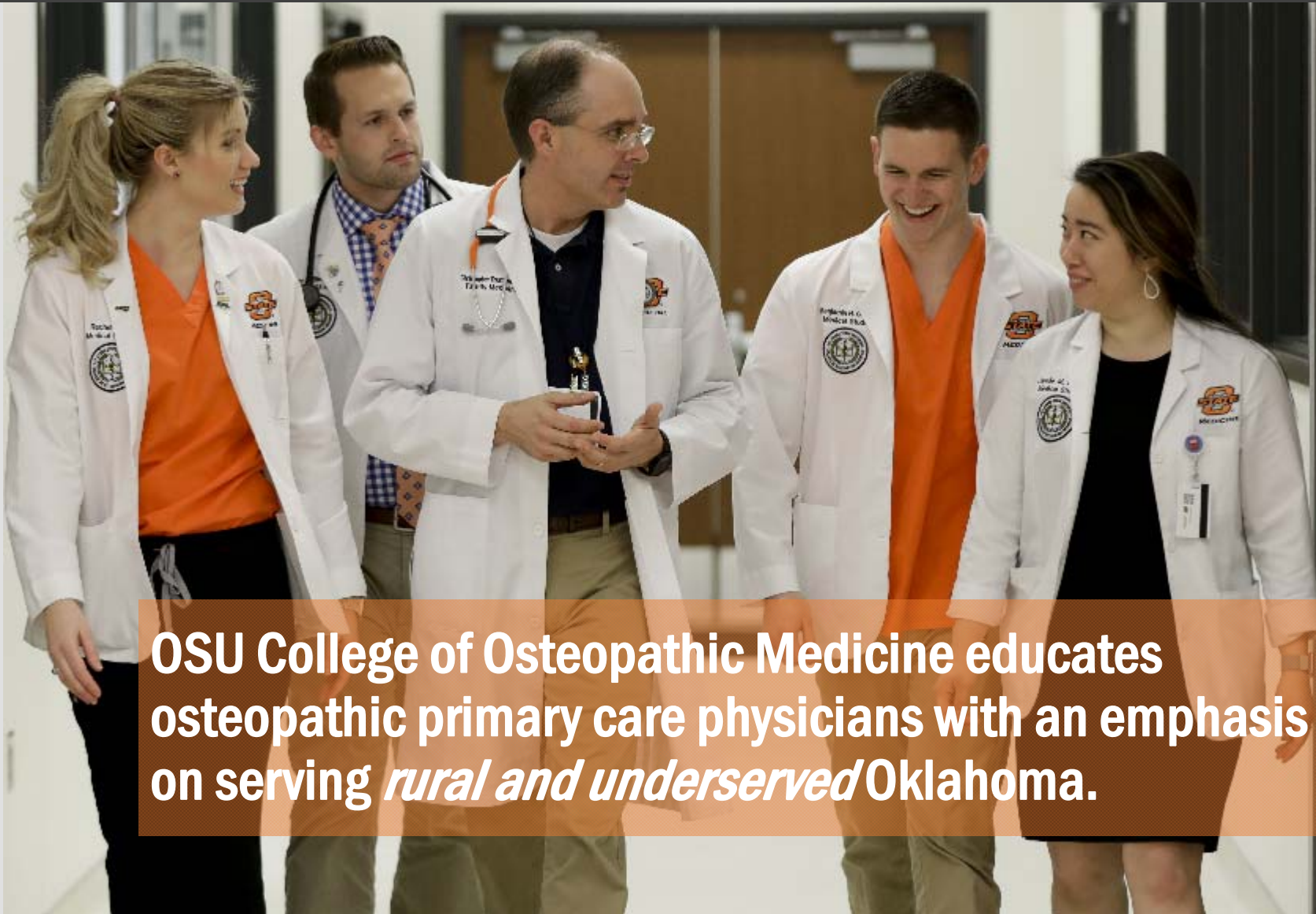


# Strategies for Developing a Rural Physician Workforce

Kayse M. Shrum, D.O.

President, Oklahoma State University Center for Health Sciences  
Dean, College of Osteopathic Medicine

# MISSION AT OSU MEDICINE



**OSU College of Osteopathic Medicine educates osteopathic primary care physicians with an emphasis on serving *rural and underserved* Oklahoma.**

# OKLAHOMA'S POOR HEALTH STATUS

**#43** overall health

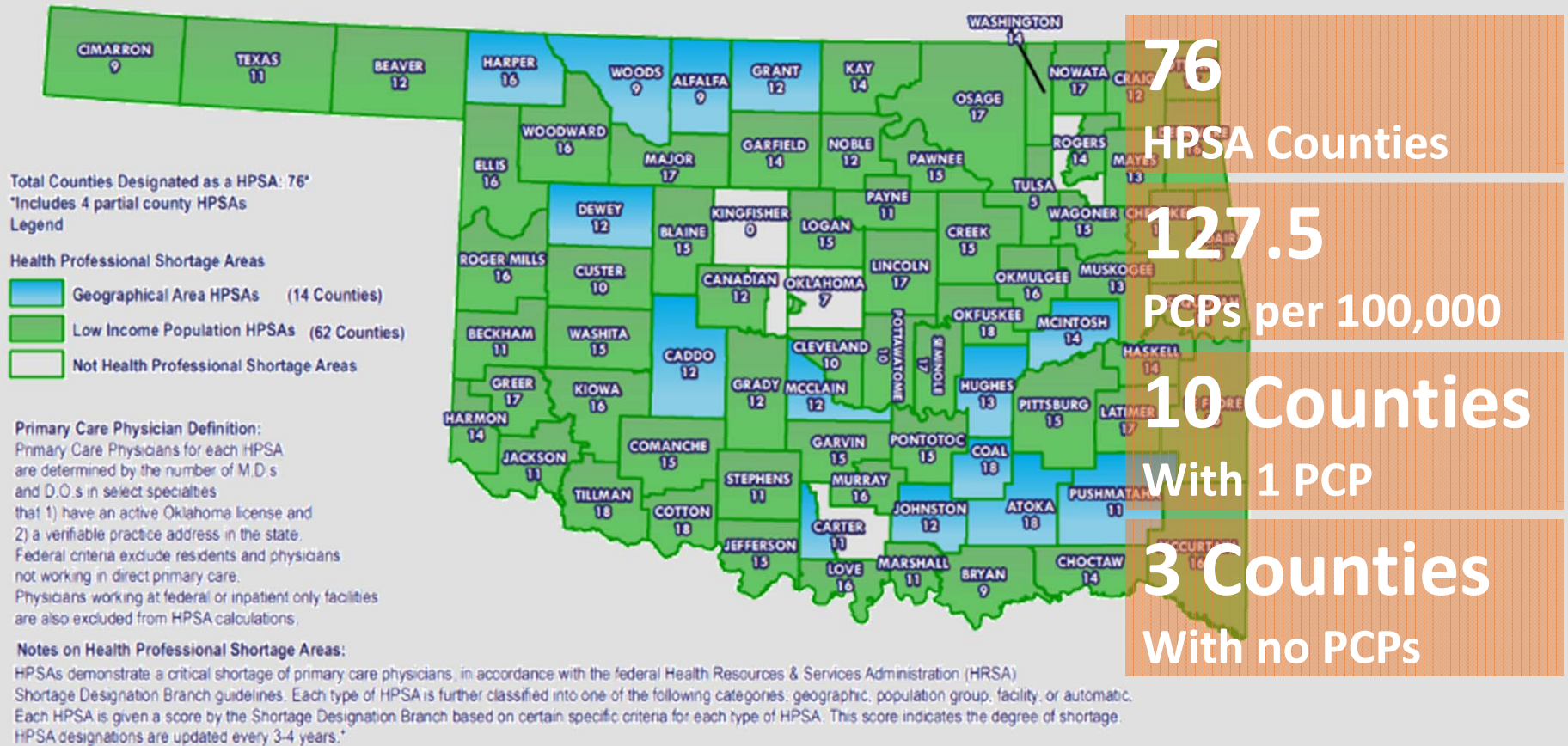
**#35** primary care physicians

**#48** cardiovascular deaths

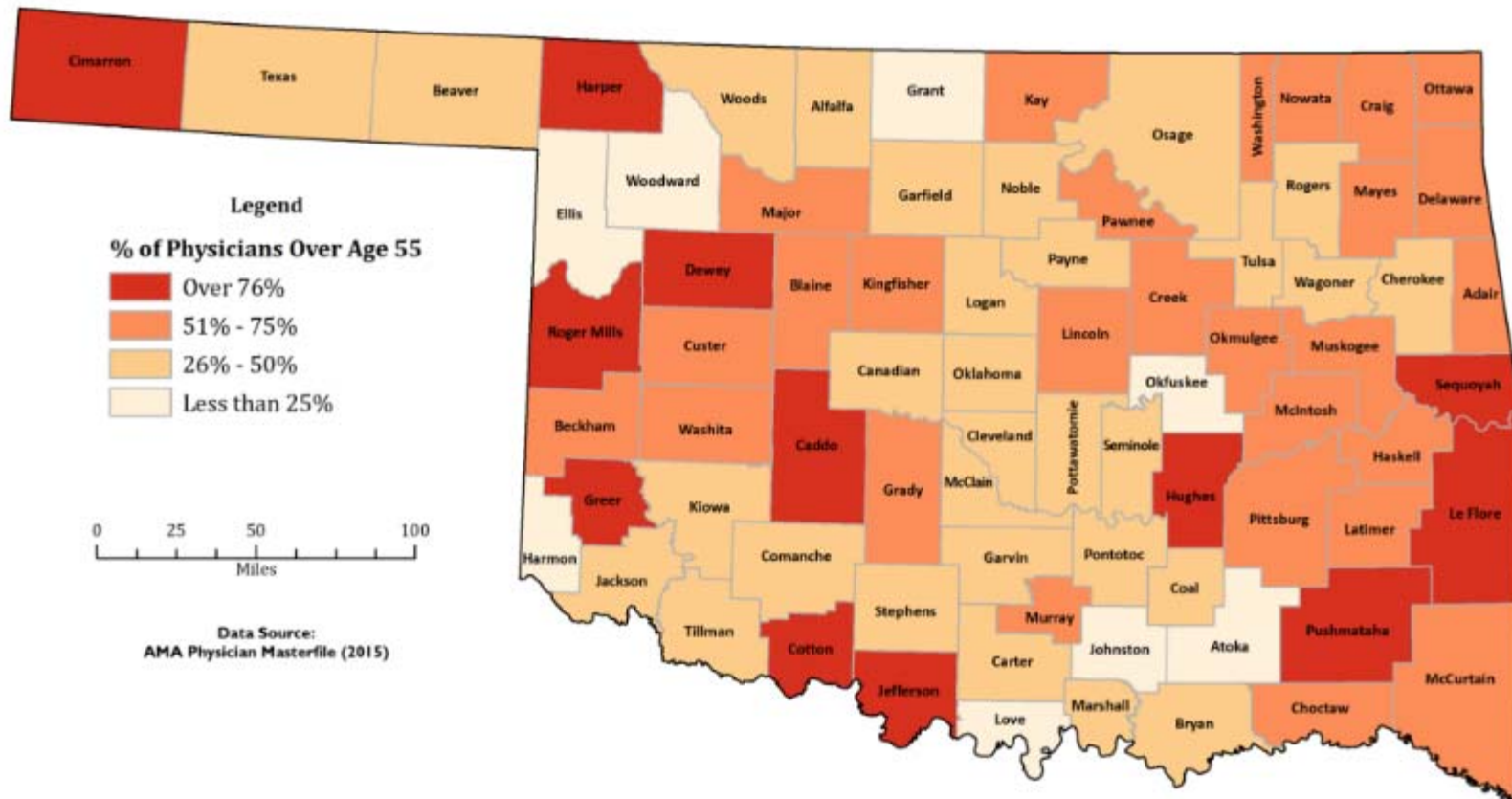
**#44** premature deaths

# PRIMARY CARE PHYSICIAN SHORTAGE

## Primary Care Health Professional Shortage Areas (HPSAs)



# AGING RURAL PHYSICIAN WORKFORCE



56

average age of rural primary care physicians

57

percentage of rural primary care physicians over the age of 55

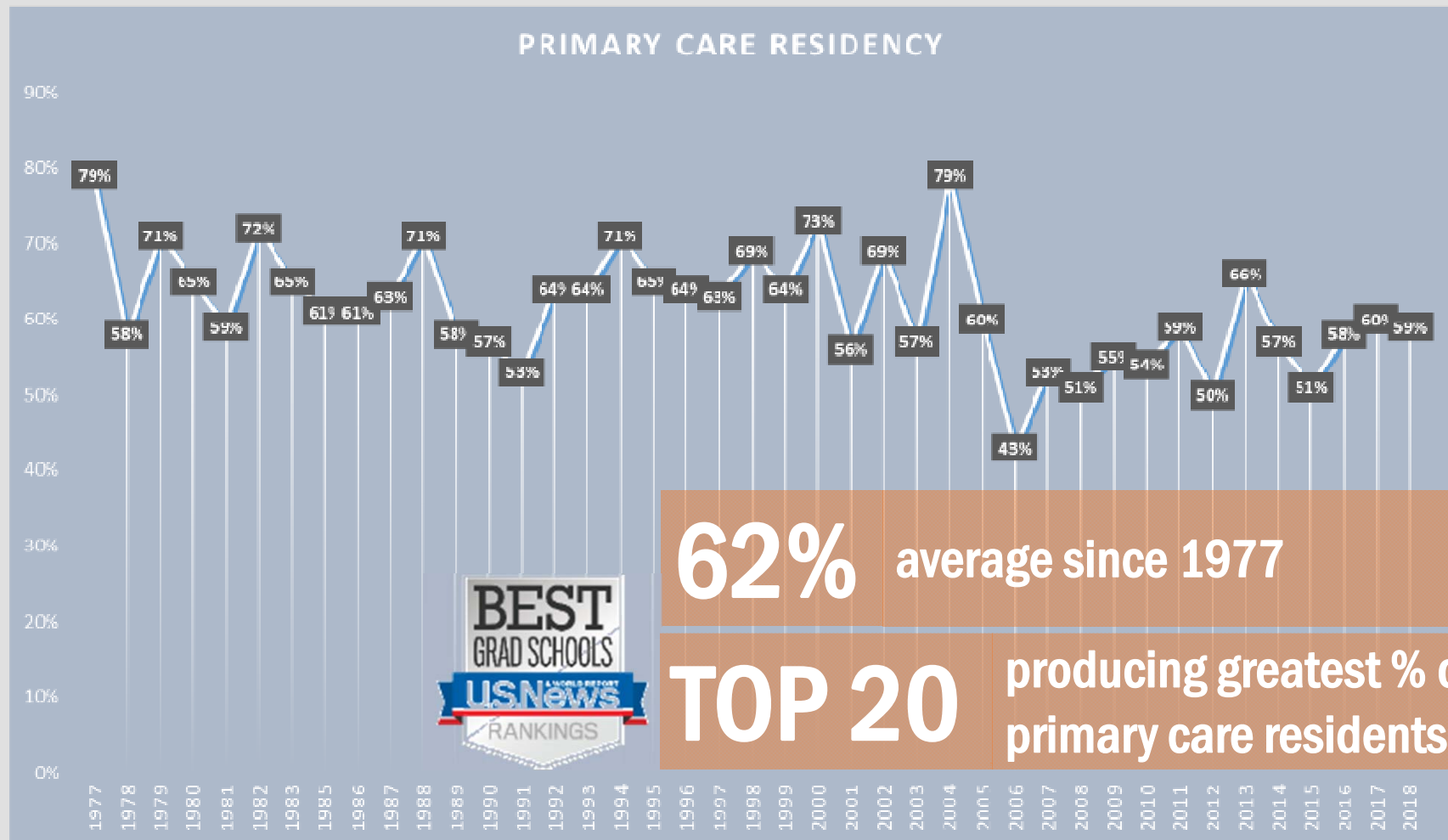
%

27

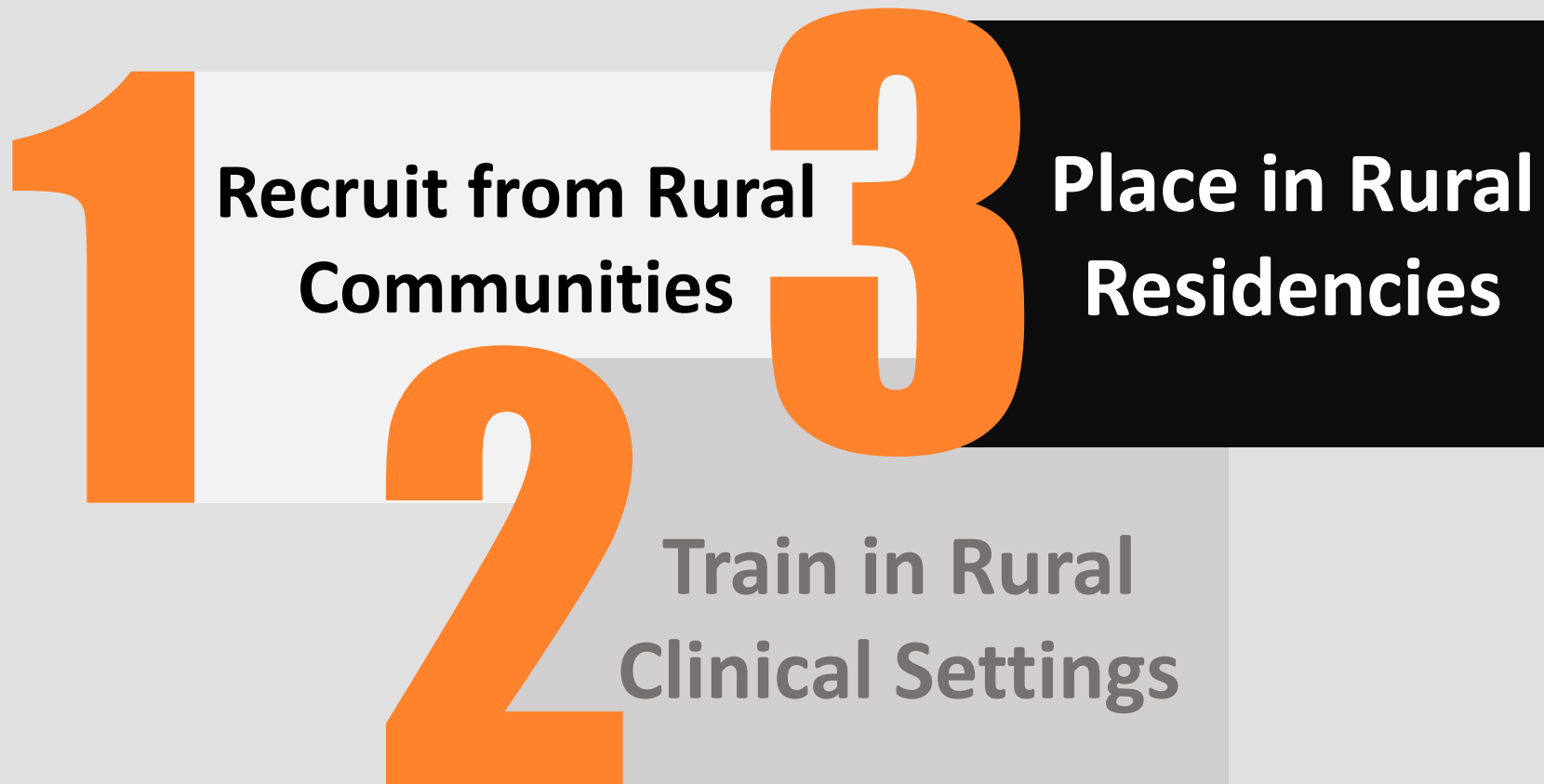
percentage of rural primary care physicians over the age of 65

%

# OSU MEDICINE GRADUATES SELECTING PRIMARY CARE RESIDENCIES (1977 – 2018)



# RURAL PHYSICIAN PIPELINE MODEL



# RURAL ENRICHMENT PROGRAMS

Dr. Pete's Medical Immersion Camp

Blue Coat to White Coat

Native Explorers

Operation Orange

OKStars





# ENRICHMENT PROGRAMS BY THE NUMBERS

## Operation Orange



700

participants annually

## Blue Coat to White Coat



750

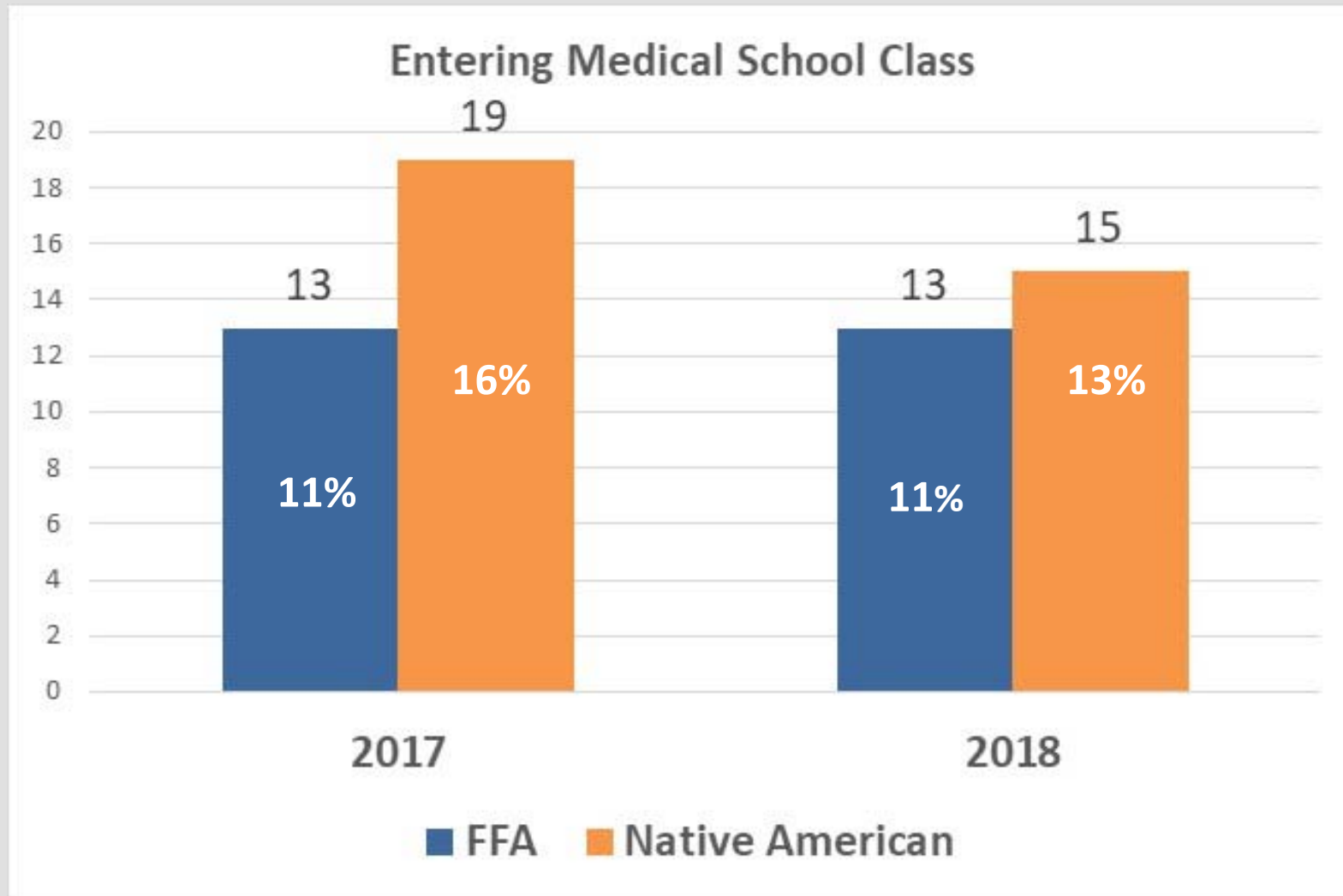
participants annually

# TRIBAL ENGAGEMENT WITH RURAL TALENT IDENTIFICATION

	Operation Orange	Immersion Camp	Native Explorers	OKstars
Cherokee Nation	✓	✓	✓	✓
Choctaw Nation	✓	✓	✓	✓
Chickasaw Nation	In discussion	✓	✓	✓



# MEASURABLE OUTCOME



# MEASURABLE OUTCOME: OSU MEDICINE CLASS OF 2018 GRADUATES



**16** American Indian medical graduates

**14%** of the graduating class

#### Tribal Nations Represented:

- ❖ Cherokee Nation
- ❖ Chickasaw Nation
- ❖ Choctaw Nation of Oklahoma
- ❖ Muscogee (Creek) Nation
- ❖ Osage Nation
- ❖ Seminole Nation of Oklahoma

# 3+1 ADMISSIONS PROGRAMS

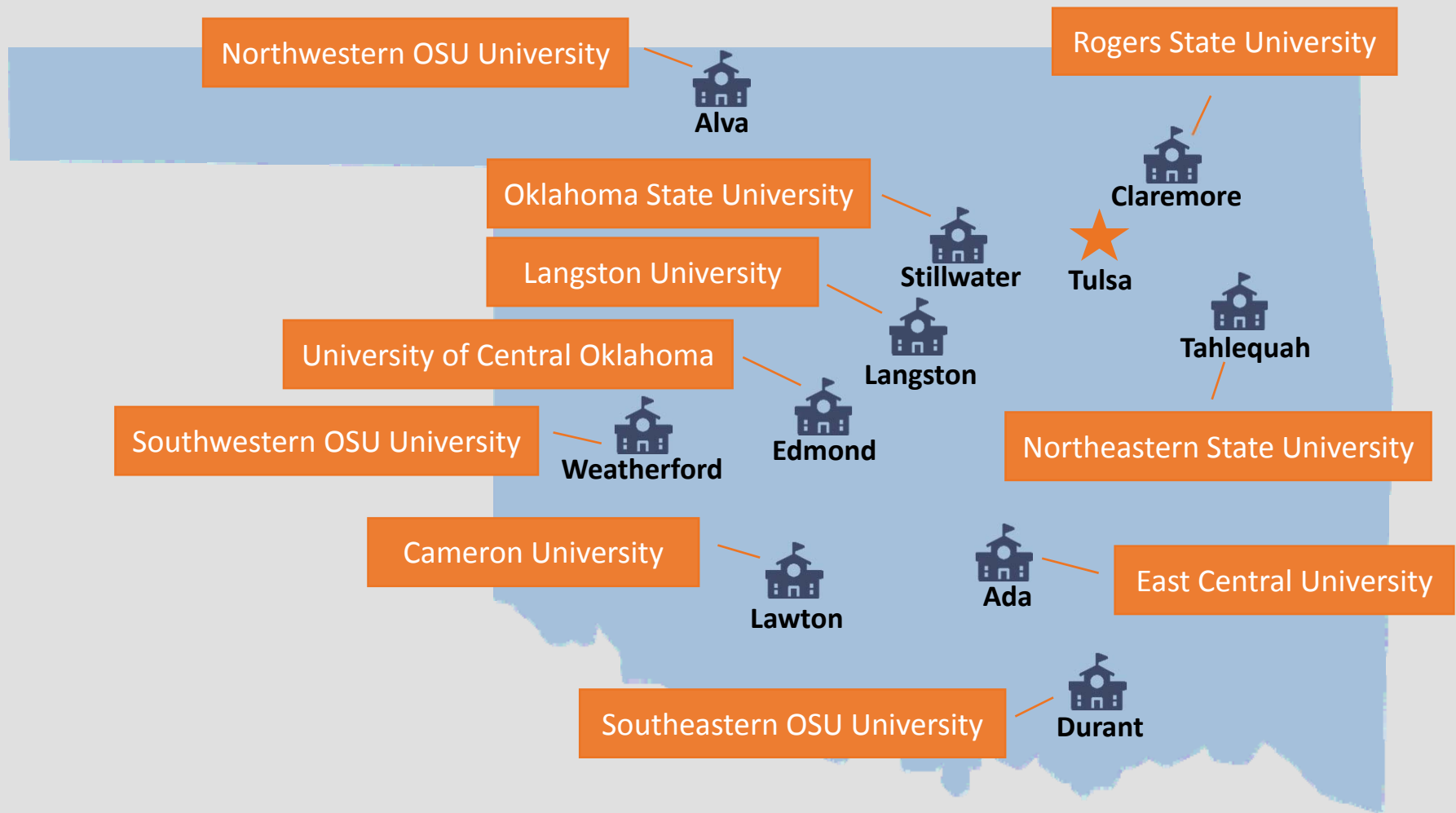


Accelerated medical program

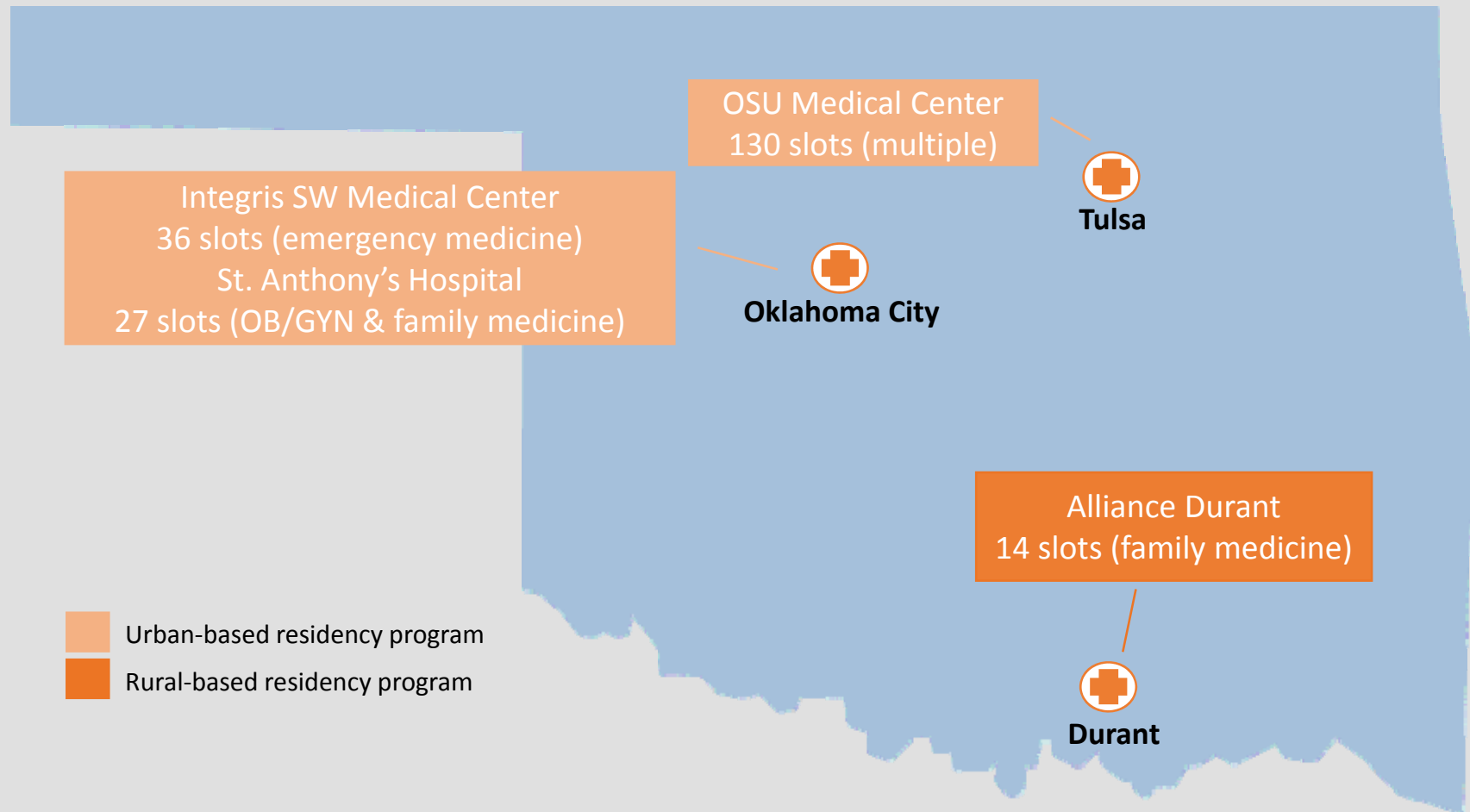
Interest in practicing rural primary care medicine

Partnerships with regional universities and OSU Stillwater

# 3+1 ADMISSIONS PARTNERING UNIVERSITIES



# RESIDENCY PROGRAMS 2008 SNAPSHOT



# RESIDENCY PROGRAMS 2018 SNAPSHOT

*Since 2008...*

**6** new rural residency programs, **118** new rural residency slots

Ada: 12 slots  
(family medicine)

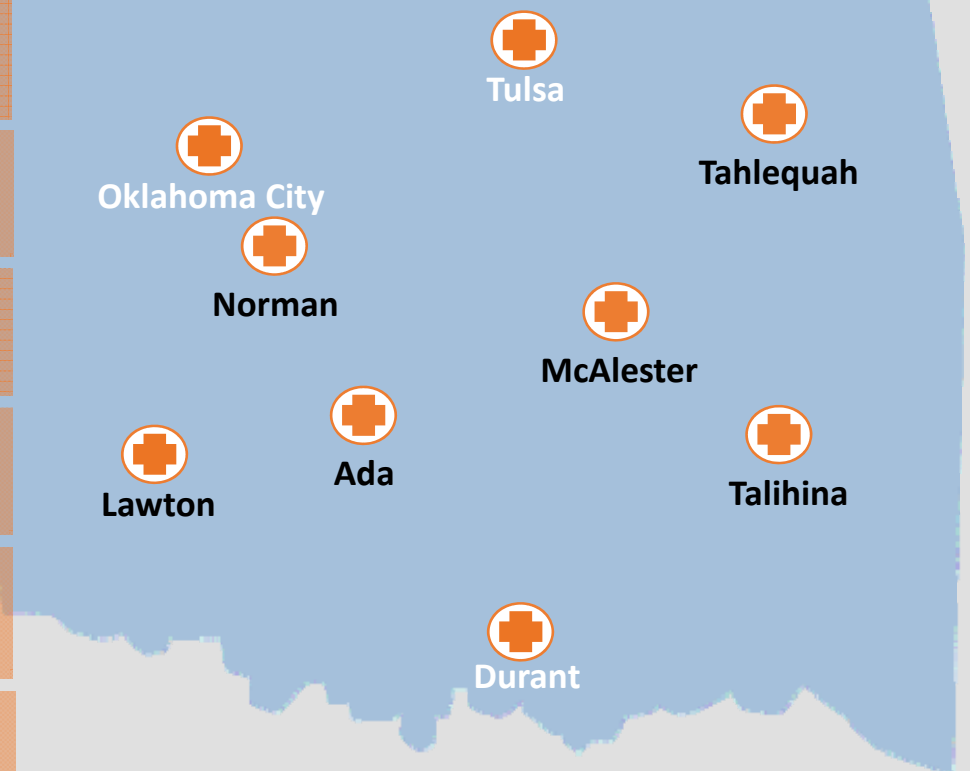
Lawton: 28 slots  
(family & emergency medicine)

McAlester: 23 slots  
(family & internal medicine)

Norman: 24 slots  
(emergency medicine)

Tahlequah: 22 slots  
(family & internal medicine)

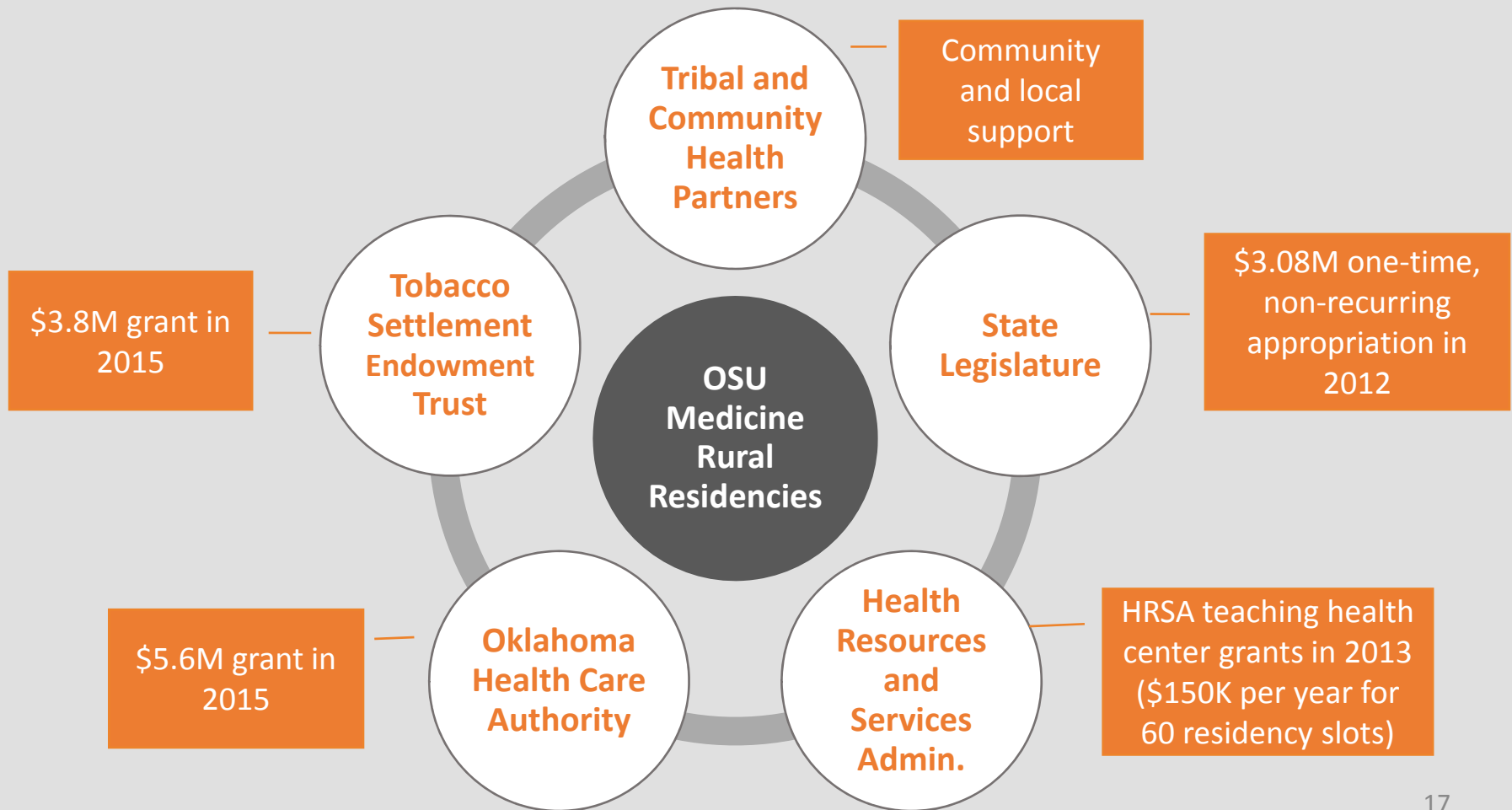
Talihina: 9 slots  
(family medicine)





# KEYS TO RURAL RESIDENCY SUCCESS

## EDUCATIONAL AND FUNDING PARTNERSHIPS



# RURAL PIPELINE HOTSPOTS

## The Rural Physician Pipeline Trifecta Effect:

1. Operation Orange High School Enrichment Program
2. 3+1 Admissions University Partner
3. Residency Program Partner



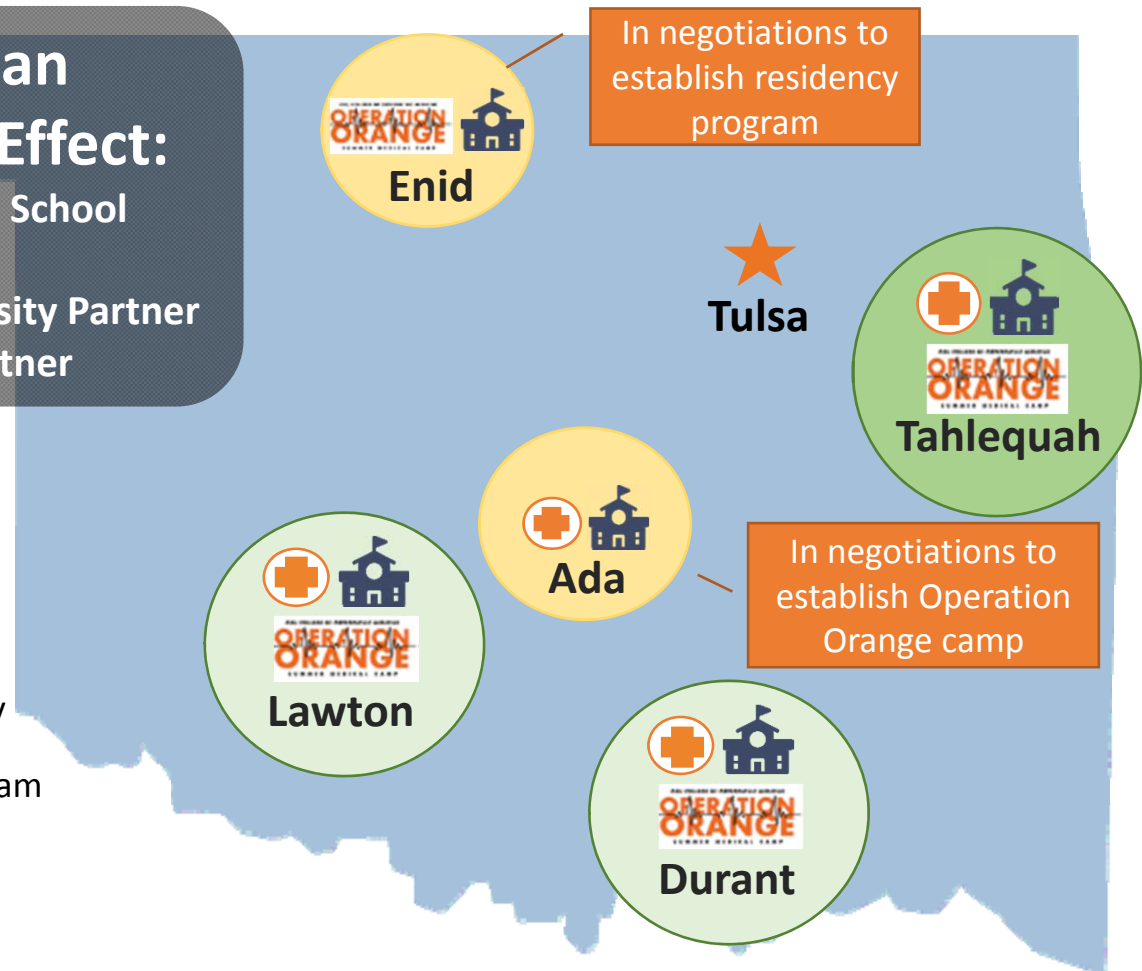
Operation Orange



3+1 Partner University



Rural Residency Program



# NATION'S FIRST TRIBALLY AFFILIATED MEDICAL SCHOOL



Partnership with the Cherokee Nation

Located in Tahlequah, OK

60,000 ft<sup>2</sup> dedicated space on W.W. Hastings campus

Full four years of medical school curriculum

Up to 50 medical students per entering class

Target date for enrollment: Fall 2020

# SHORT-TERM SOLUTION TO RURAL PHYSICIAN SHORTAGE

## Project ECHO



Evidence-based knowledge and best practices from OSU-CHS is pushed out to clinicians, cooperative extension offices, and school districts in rural communities



# PROJECT ECHO SERVICE LINES



Addiction  
Medicine

Adult  
Psychiatry

Alzheimer's

Hepatitis C

Pediatric  
Psychiatry

Obesity  
Medicine

Viral  
Disorders

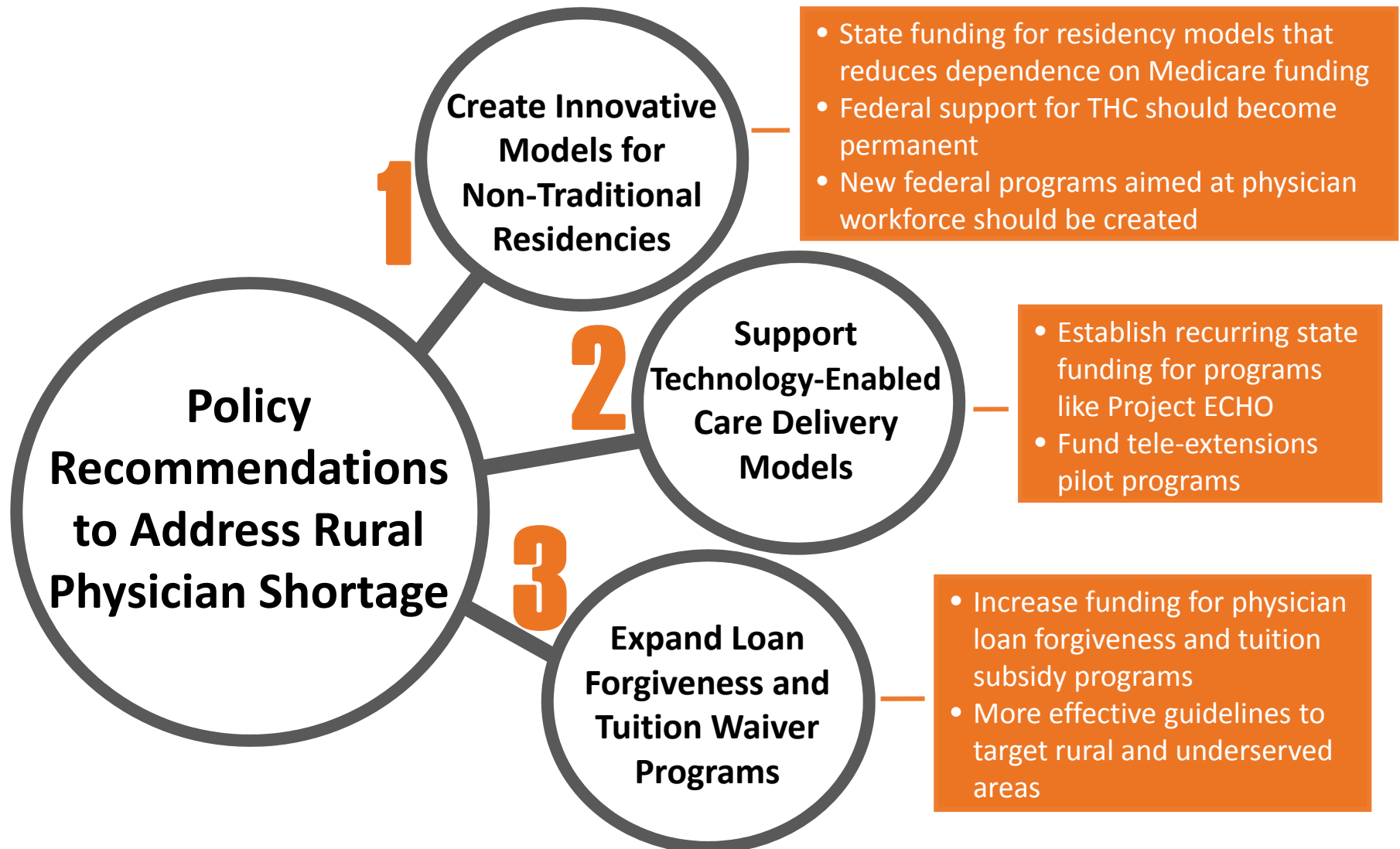
# PROJECT ECHO MEASURABLE OUTCOME

January 2017 – August 2018



**261** clinics **1,967** participants **223** cases presented  
**\$23 MILLION** in cost savings

# POLICY RECOMMENDATIONS





**MEDICINE**

**THANK YOU!**



**Kayse M. Shrum, D.O.**

**President, Oklahoma State University Center for Health Sciences**

**Dean, College of Osteopathic Medicine**

**[kayse.shrum@okstate.edu](mailto:kayse.shrum@okstate.edu)**