

Dennis Culhane

MACARTHUR
The John D. and Catherine B. MacArthur Foundation



ACTIONABLE INTELLIGENCE FOR SOCIAL POLICY

Common State Policy Challenges Demand IDS

Superutilizers of Health Care Services

Often driven by people with complex social disadvantages



Common State Policy Challenges Demand IDS

Educational Achievement Gaps

Often driven by health and developmental needs

Adolescent Examples:
School drop out,
multi-system youth,
behavioral health issues



Common State Policy Challenges Demand IDS

Early Childhood & School Readiness

Often mediated by maternal child health, home visiting,
early intervention screening and detection, and pre-k enrichment



Common State Policy Challenges Demand IDS

- Opiate Crisis
 - ▣ Creating sentinels for intervention through integrated data



Common State Policy Challenges Demand IDS

- Prisoner re-entry
 - ▣ Aging population that's returning with housing and treatment needs



Common State Policy Challenges Demand IDS

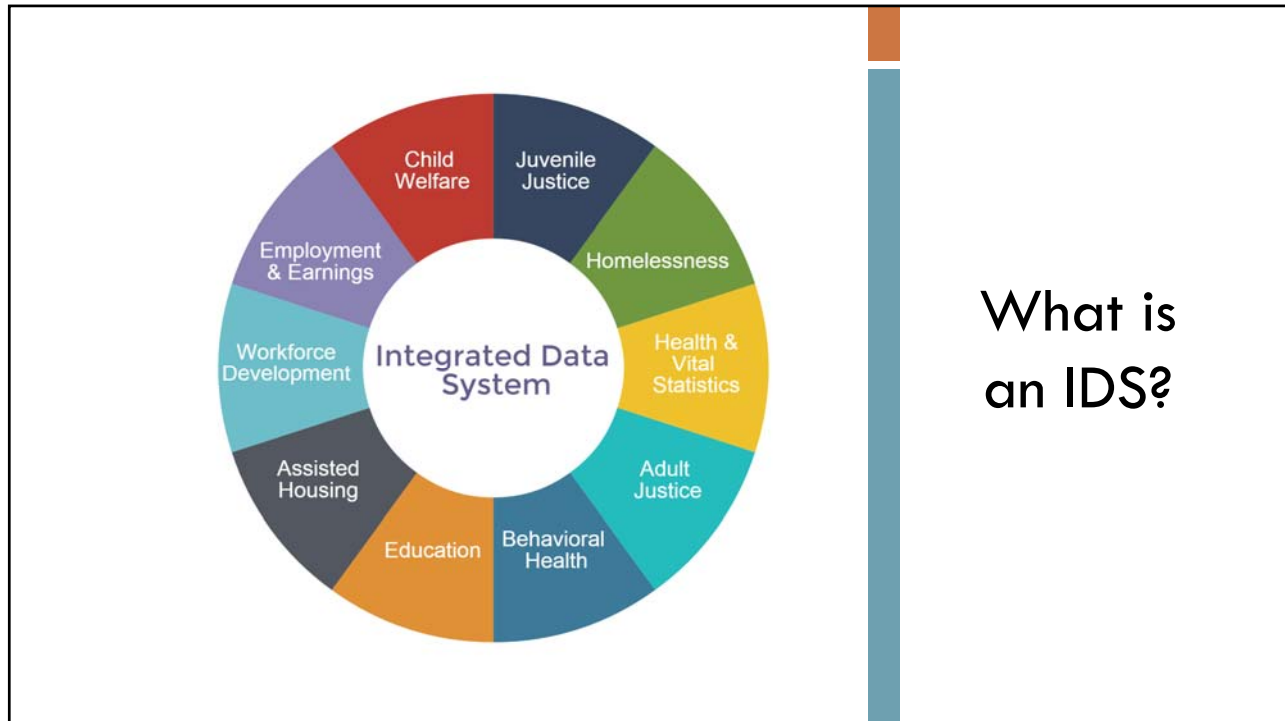
- Child welfare abuse/neglect allegations
 - ▣ Adverse childhood events are common drivers of adolescent and adult health outcomes



INTEGRATED DATA SYSTEMS



- Multi-agency systems reform
- Focus on the person and issues
- Not a single agency policy or program.



An integrated data system is not primarily an IT project. Integrated data systems are mostly about **people**.

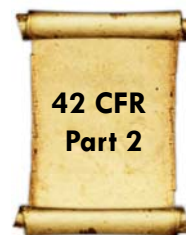
The Governance Process and Data Sharing Requirements

- The IDS governance process sits at the center of the “system”
 - Master MOU sets policies and procedures
 - Establishes legal framework for data access
 - Sets data security and handling policies
 - May include community/stakeholder engagement
 - Defines results review and dissemination process
- DUAs ensure end-user compliance with policies and procedures

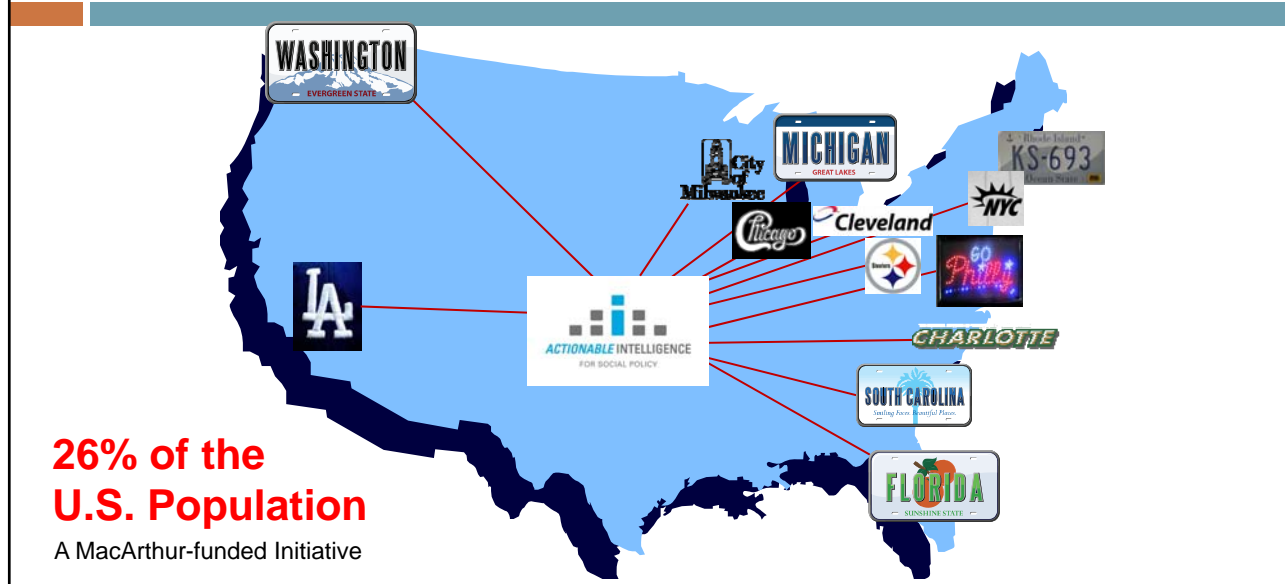
Federal Laws Governing Data Sharing



Each includes
evaluation, audit,
and/or research
exemptions

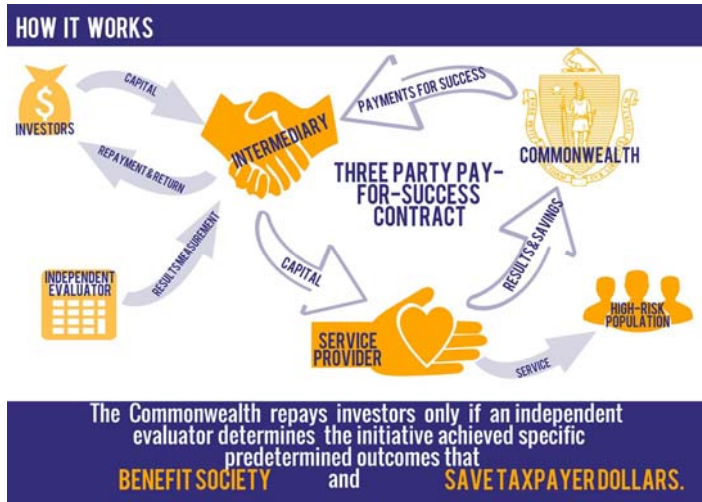


AISP Network of Integrated Data Systems



Related Policy Innovations

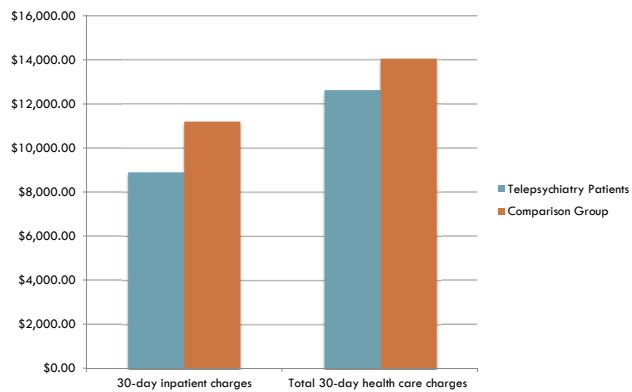
- Pay for success/social impact financing
 - Example: Massachusetts' Chronic Individual Homelessness Pay for Success Initiative



Related Policy Innovations

□ High-speed/low-cost RCTs

□ Example: South Carolina's Telepsychiatry Initiative



Related Policy Innovations

□ Commissioned partnerships

□ Blue ribbon commission

- Example: Los Angeles County's General Relief Reform Panel

□ Foundation-initiated projects



Related Policy Innovations

□ Obama Evidence & Innovation Agenda



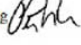
THE DIRECTOR

EXECUTIVE OFFICE OF THE PRESIDENT
OFFICE OF MANAGEMENT AND BUDGET
WASHINGTON, D.C. 20503

December 8, 2009

M-10-06

MEMORANDUM FOR THE HEADS OF EXECUTIVE DEPARTMENTS AND AGENCIES

FROM: Peter R. Orszag 
Director

SUBJECT: Open Government Directive

Ryan-Murray Commission on Evidence Based Policymaking

- Bipartisan Effort
- Main Goals
 - Improve availability and use of administrative data to build evidence and inform program design
 - Protect privacy and confidentiality of these data
- One likely recommendation will include the use of programmatic administrative funds for IDS development



Greater Access & Increased Security is Possible

- AISP Network sites are exemplars
- Many countries in Europe, provinces in Canada, and states in Australia provide access to linked records
 - ▣ Onsite access with disclosure review
 - ▣ Remote access with security controls

AISP TA Resources

- Online 6 week course—Spring 2017



AISP TA Resources

- Learning Communities—2 cohorts of 5-7 states each
 - Multi-discipline teams for year long multi-stage training



AISP TA Resources

- Federally-funded, site-tailored TA in partnership with Urban Institute for PFS projects



AISP TA Resources

- Expert Panel Reports on Key IDS Challenges—Available January 2017
 - Legal Issues
 - Governance
 - Data Standards
 - Technology & Security



Questions?

Visit us at

www.aisp.upenn.edu